

## Section D: Missouri Trend Data

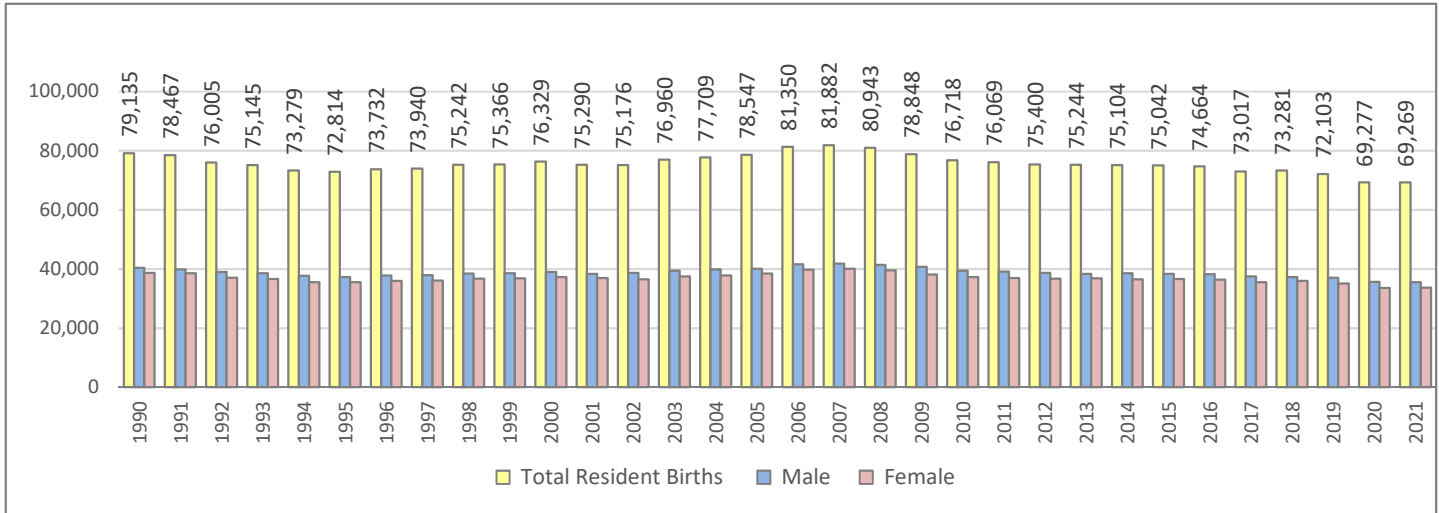
Click on the [red links](#) or scroll down to view the pages in this section that are currently available.

PAGE #

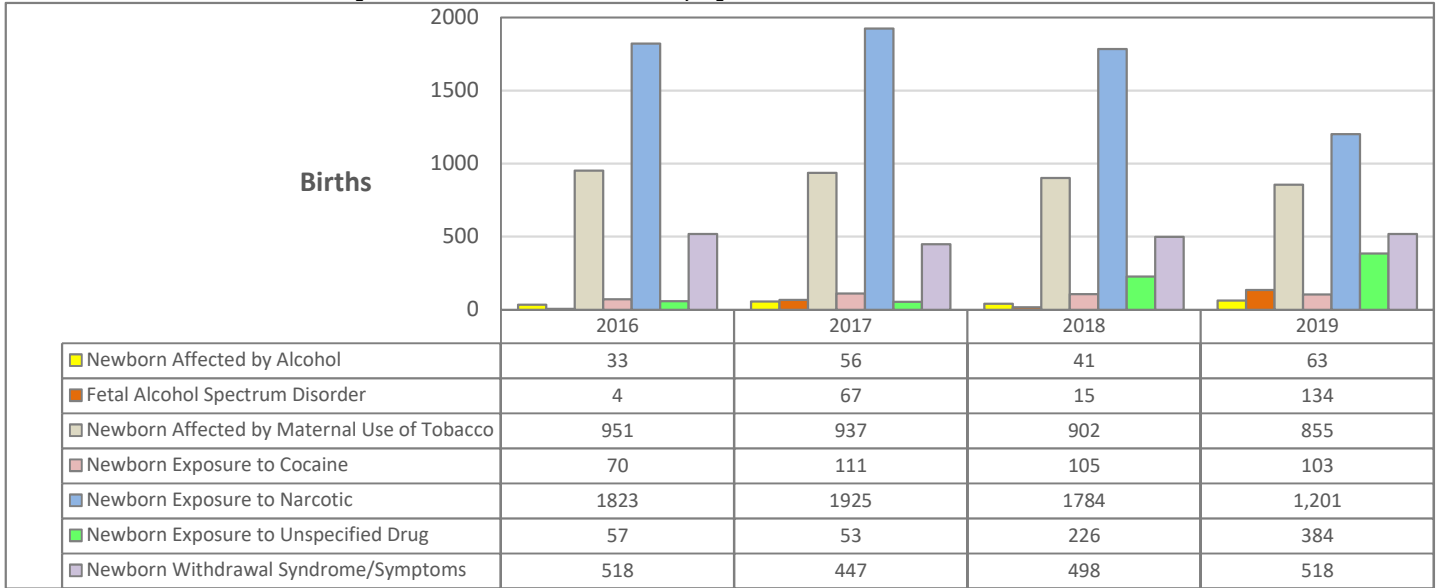
Emergency Room and Hospital Services for Alcohol Use Disorders	D-01
Emergency Room and Hospital Services for Drug Use Disorders	D-02
Emergency Room and Hospital Services for Mental Disorders	D-03
Diseases Associated with Substance Use	D-04
Births Associated with Substance Use	<a href="#">D-05</a>
Deaths Associated with Substance Use and Mental Health Issues	D-06
Traffic Crashes involving Alcohol Use	D-07
Traffic Crashes involving Drug Use	D-08
Recreational Boating Crashes involving Substance Use	<a href="#">D-09</a>
Alcohol and Drug Arrests	D-10
Juvenile Court Referrals	<a href="#">D-11</a>
Juvenile Status Offenses	<a href="#">D-12</a>
Child Abuse Referrals	<a href="#">D-13</a>
Out-of-Home Placements of Children	<a href="#">D-14</a>
Substance Related Justice Services	<a href="#">D-15</a>
Per Capita Alcohol Consumption	<a href="#">D-16</a>
Liquor Licenses	<a href="#">D-17</a>
Tobacco Consumption	D-18
Unemployment	<a href="#">D-19</a>
Poverty	<a href="#">D-20</a>

## BIRTHS

### Missouri Resident Births, by Year and Gender

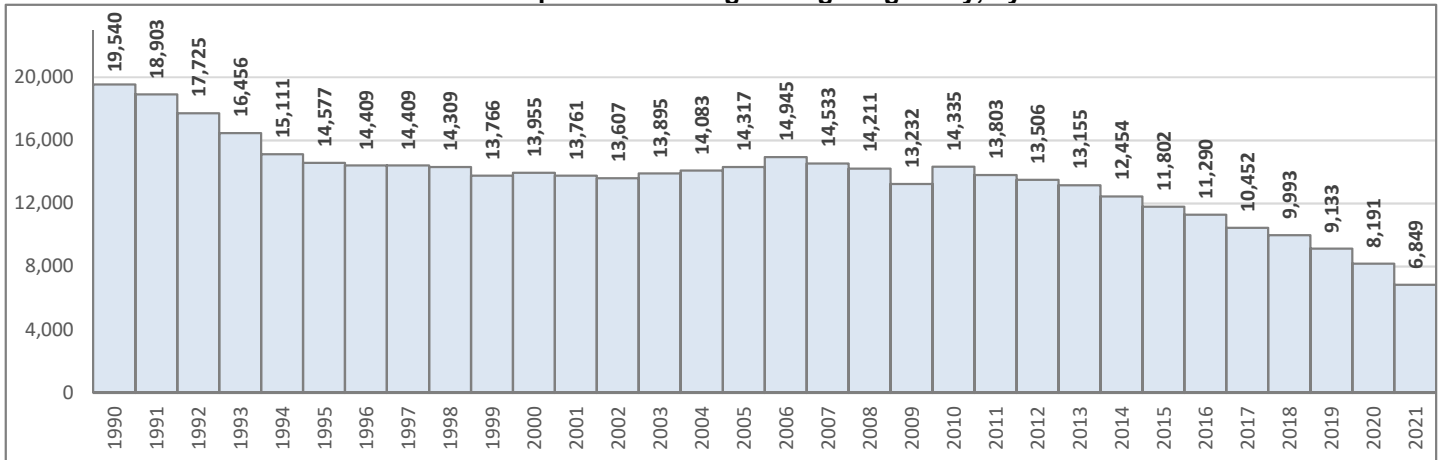


### Missouri Newborns Affected by Maternal Substance Use, by Year



Beginning fully in 2016, ICD-10 medical coding replaced ICD-9. Also beginning in 2016, newborns exposed to more than one substance are counted in each applicable category. Due to these changes in criteria and methodology, pre-2016 exposure data are not included.

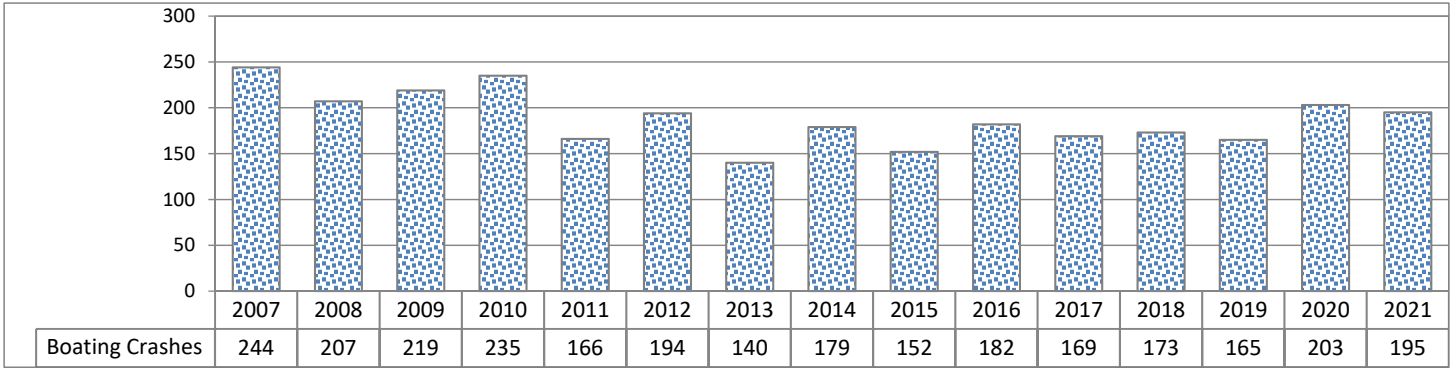
### Missouri Resident Births in which Mother Reported Smoking During Pregnancy, by Year



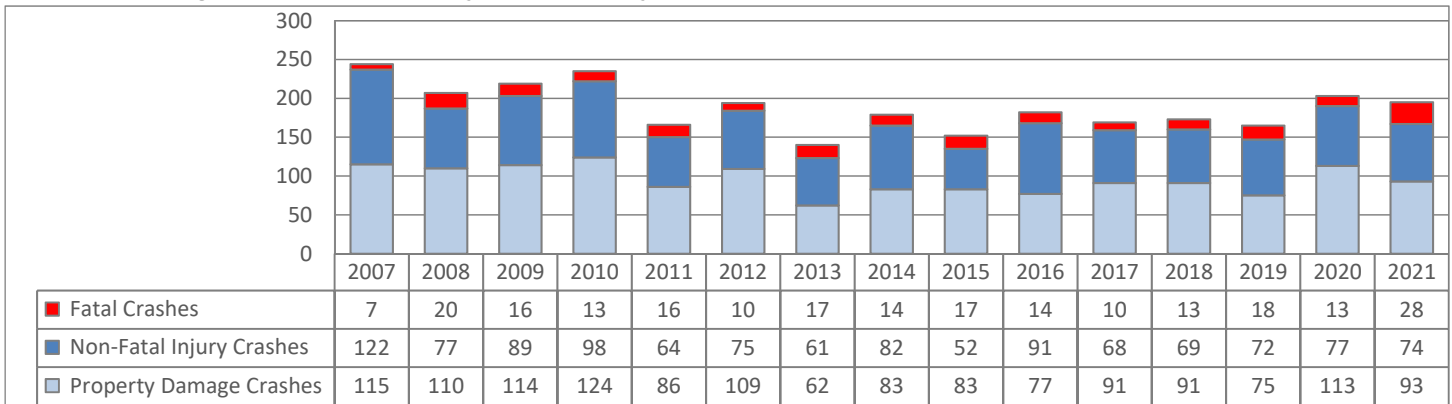
Data Source (all charts): Missouri Department of Health and Senior Services.

## RECREATIONAL BOATING CRASHES

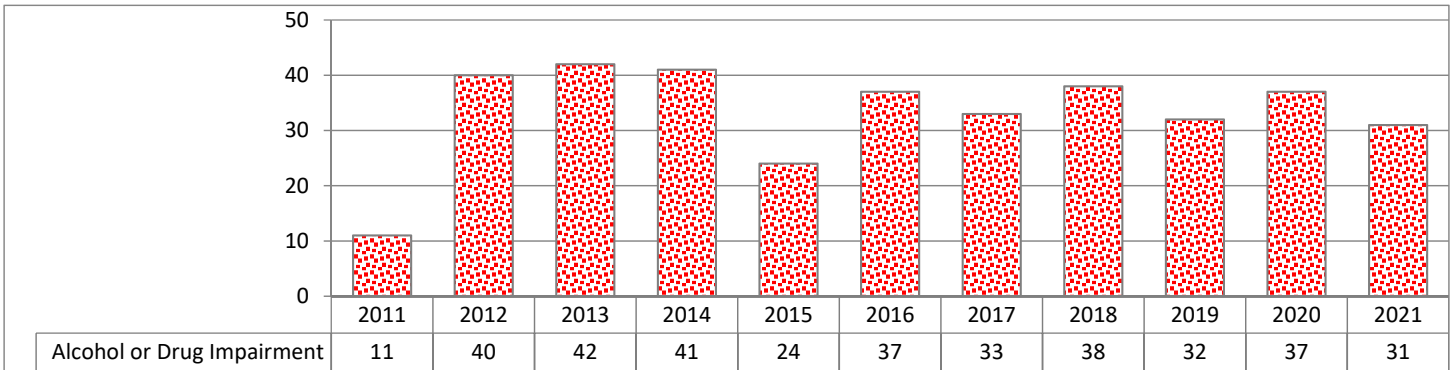
### Total Recreational Boating Crashes in Missouri



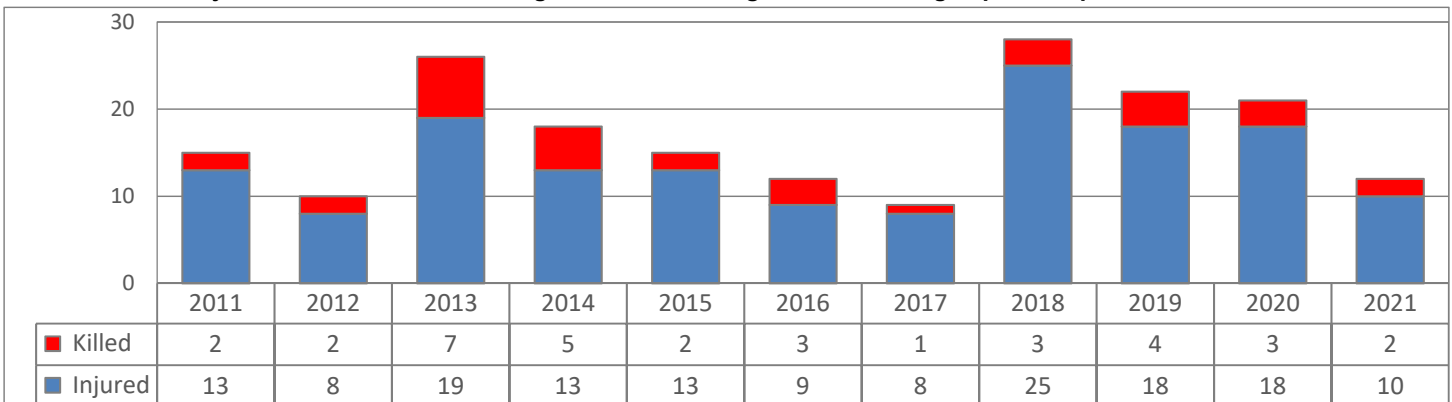
### Recreational Boating Crashes in Missouri by Crash Severity



### Recreational Boating Crashes Involving Alcohol or Drug Impaired Operator



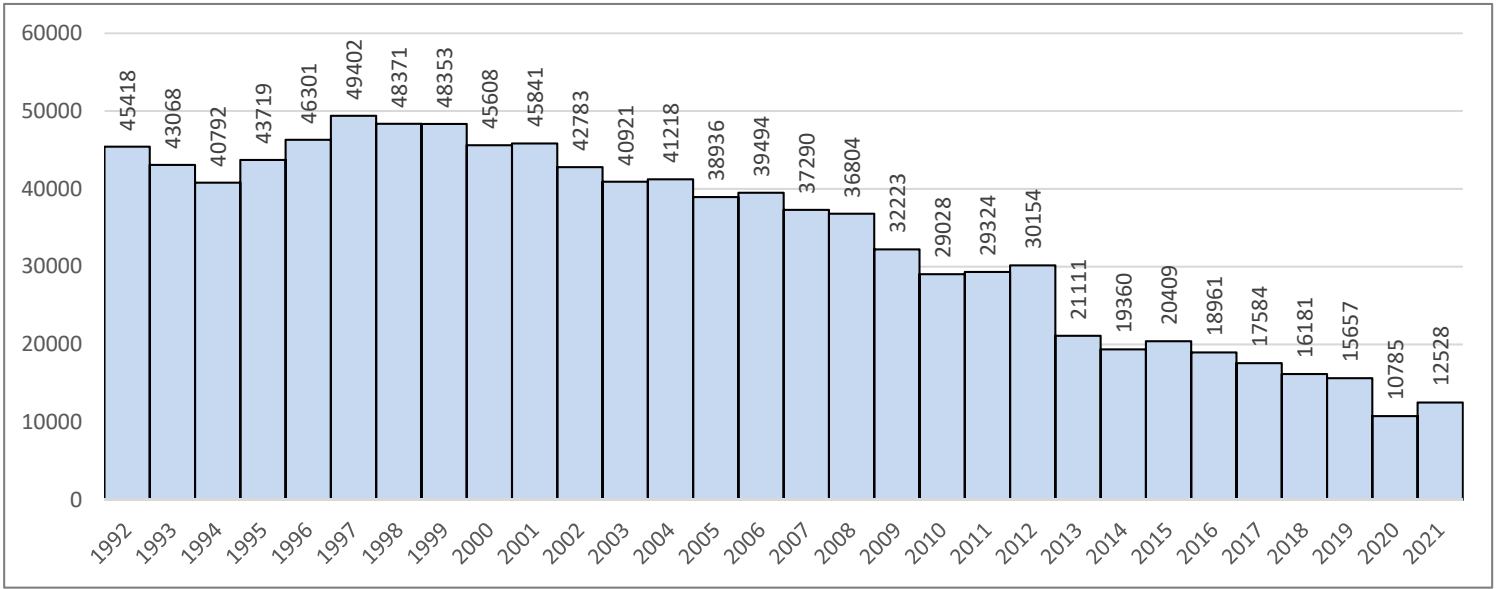
### Persons Killed and Injured in Recreational Boating Crashes involving Alcohol or Drug Impaired Operator



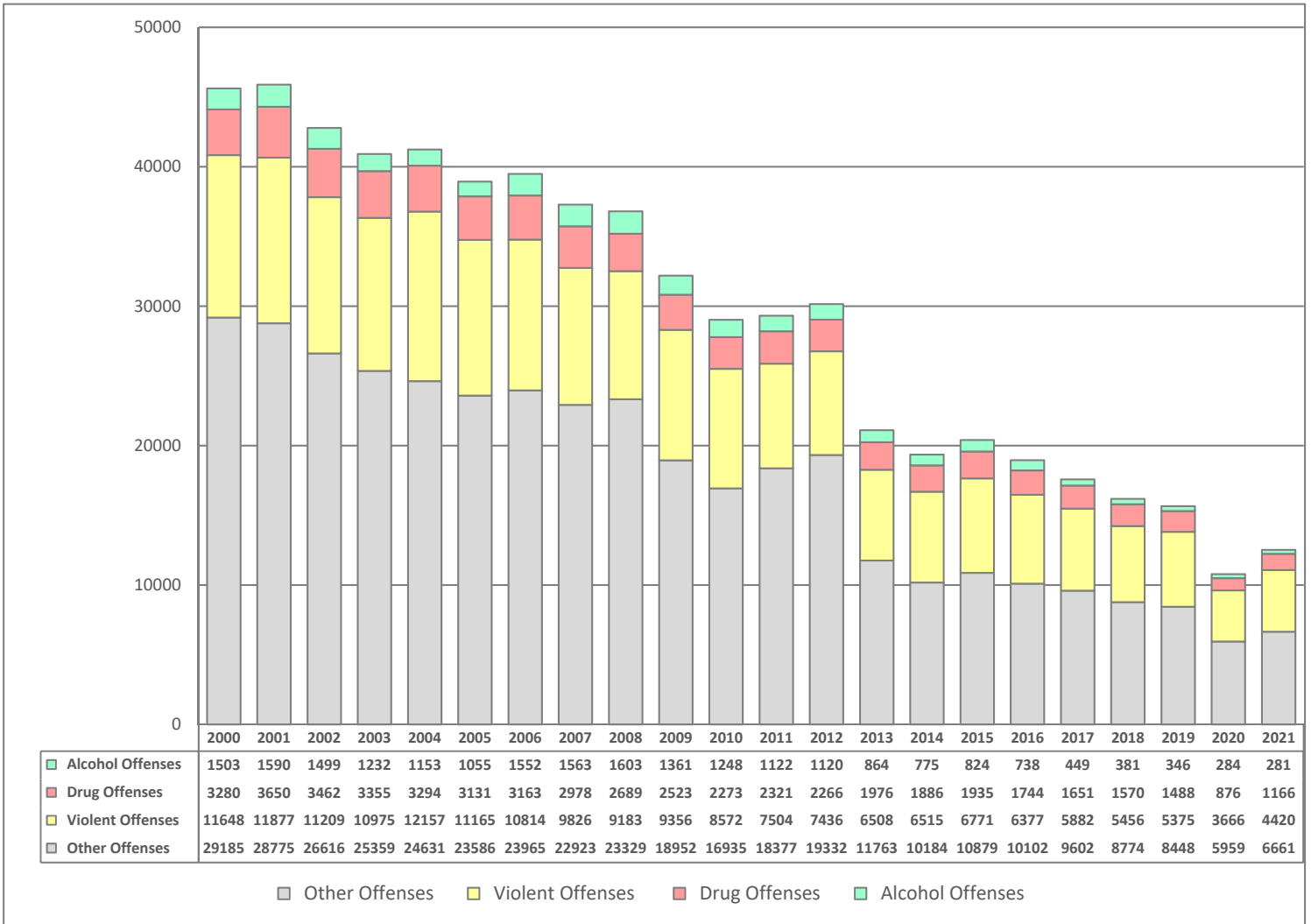
Data Source: Missouri Department of Public Safety, Missouri State Highway Patrol.  
Missouri Boating Statistics & Drownings annual report, 2012-2022 editions.

# JUVENILE COURT REFERRALS

## Total Referrals to Juvenile Courts for Law Violations, by Year



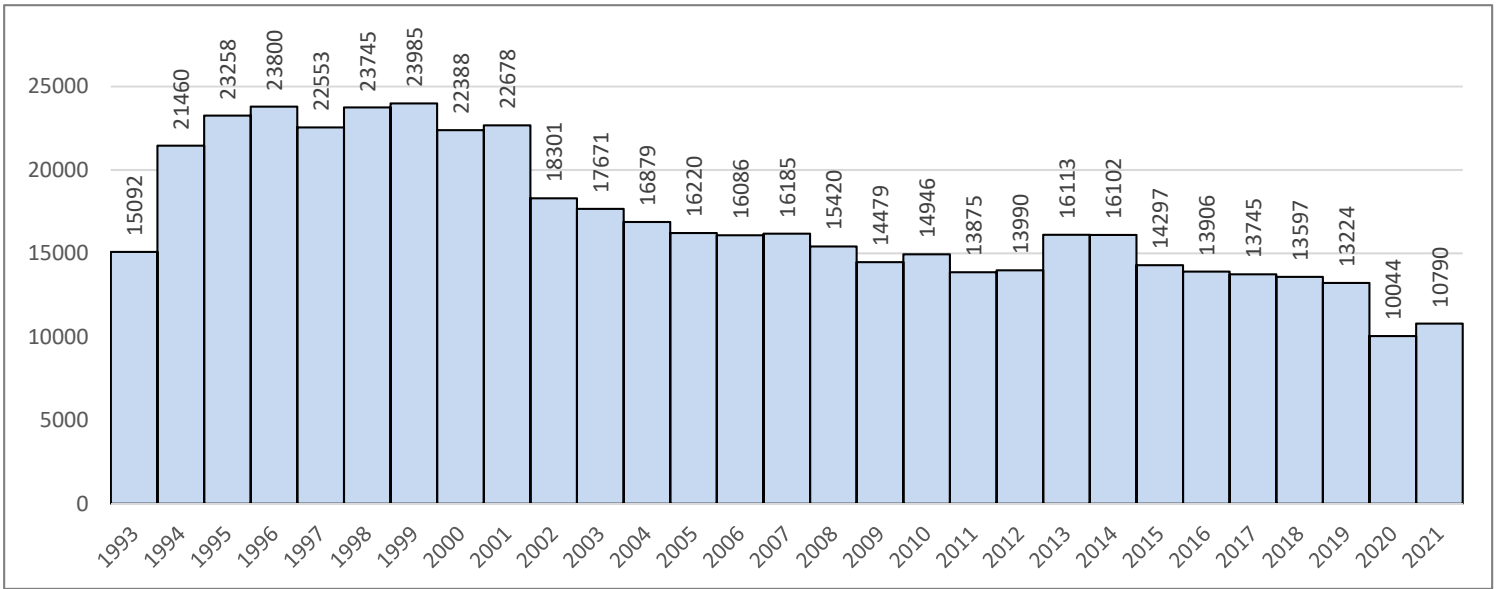
## Referrals to Juvenile Courts by Type of Offense, by Year



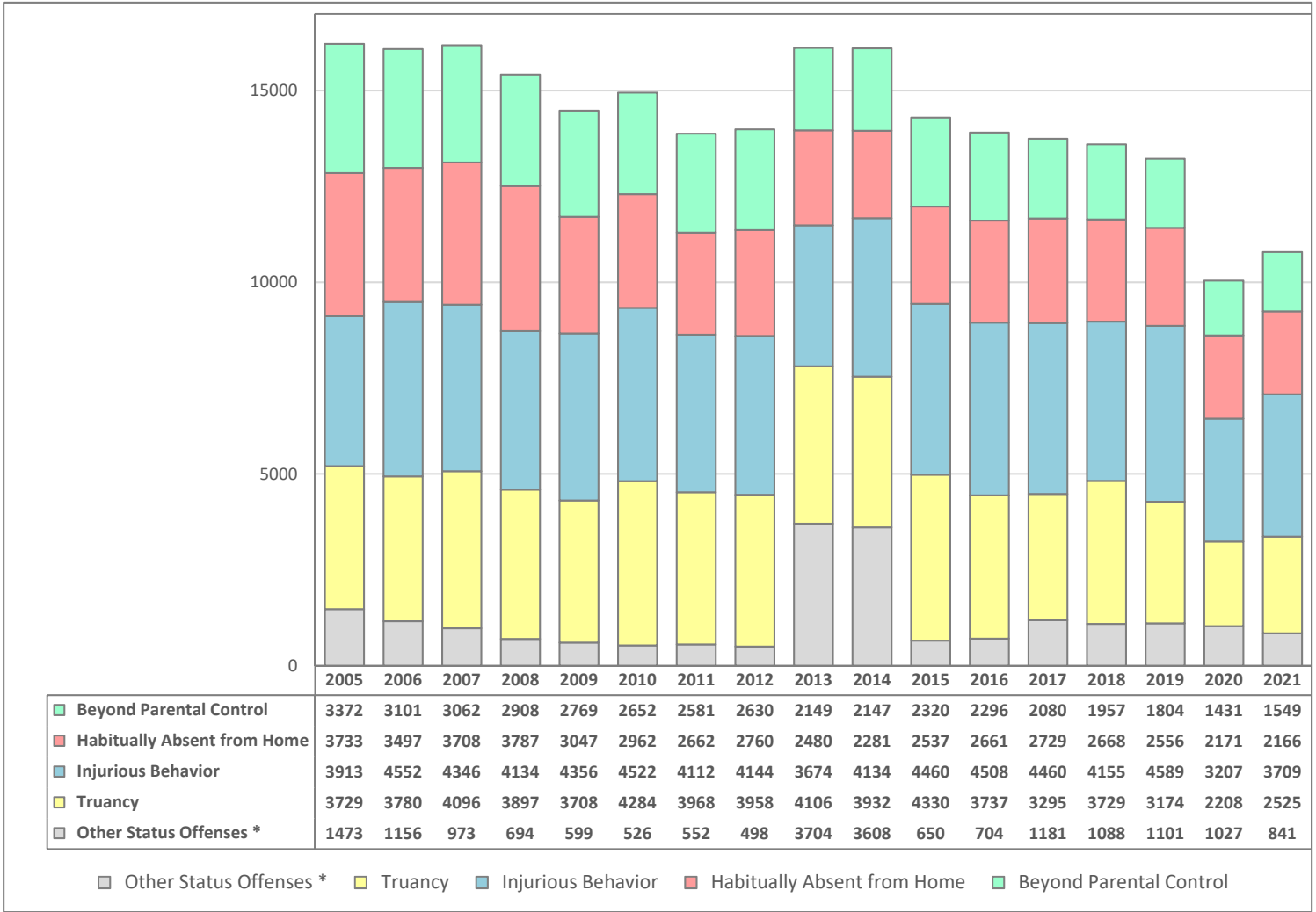
Data Sources: Missouri Office of State Courts Administrator (2009-2022); Missouri Department of Social Services (2000-2008).

# JUVENILE STATUS OFFENSES

**Total Juvenile Status Offenses, by Year**



**Juvenile Status Offenses by Category, by Year**

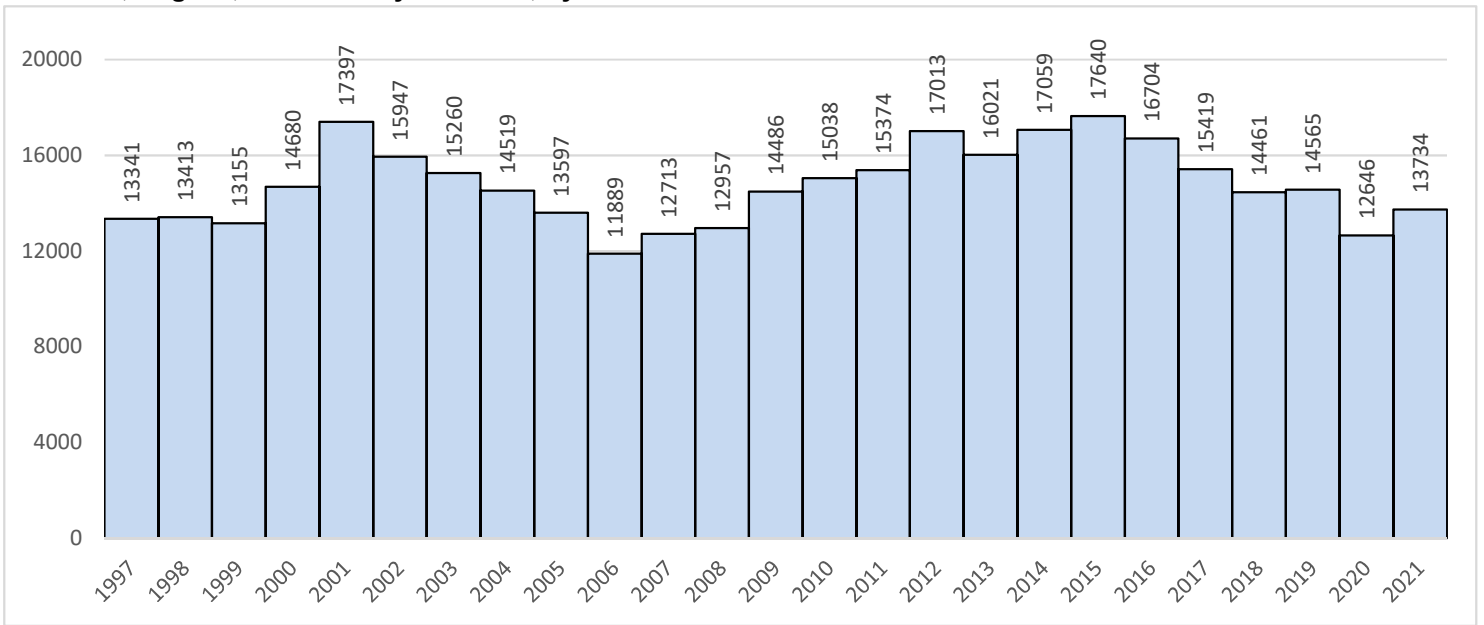


\* Beginning in 2013, some juvenile municipal violations and infractions were reclassified as status offenses.

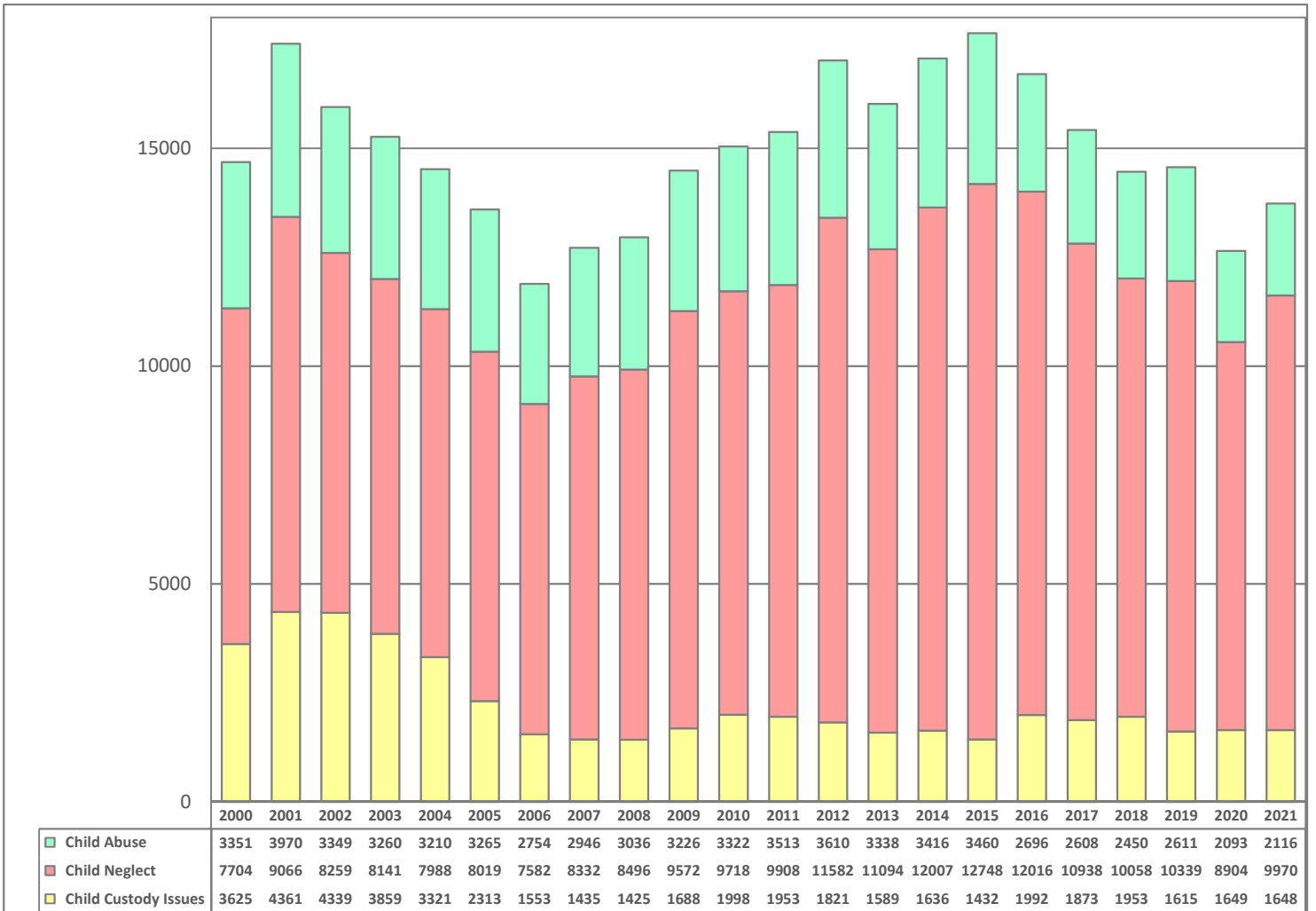
Data Sources: Missouri Office of State Courts Administrator (2009-2022); Missouri Department of Social Services (2000-2008).

## CHILD ABUSE REFERRALS

**Total Abuse, Neglect, and Custody Referrals, by Year**



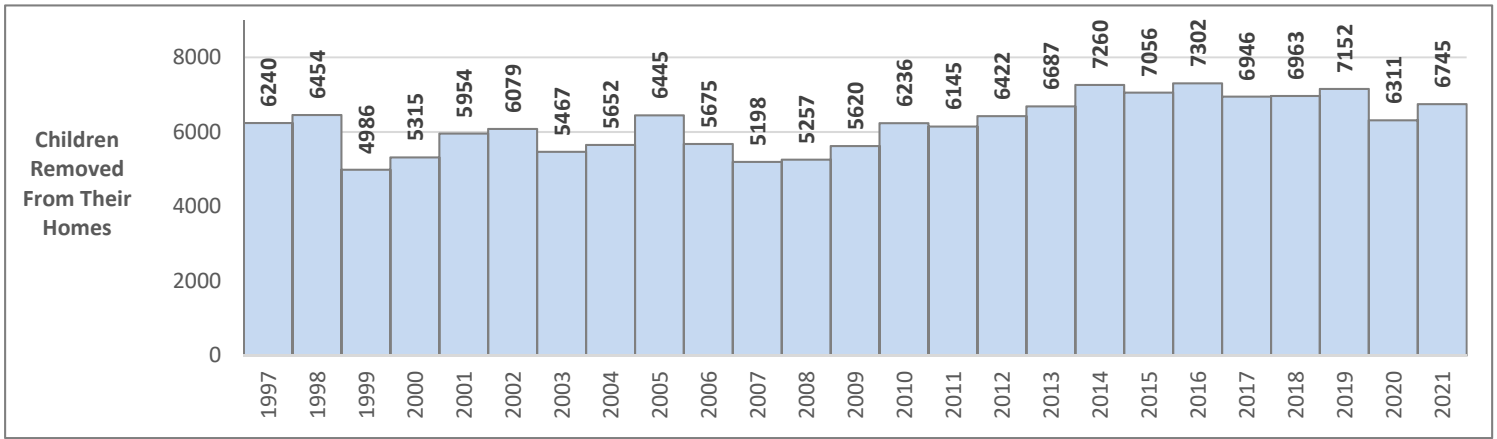
**Referral Type, by Year**



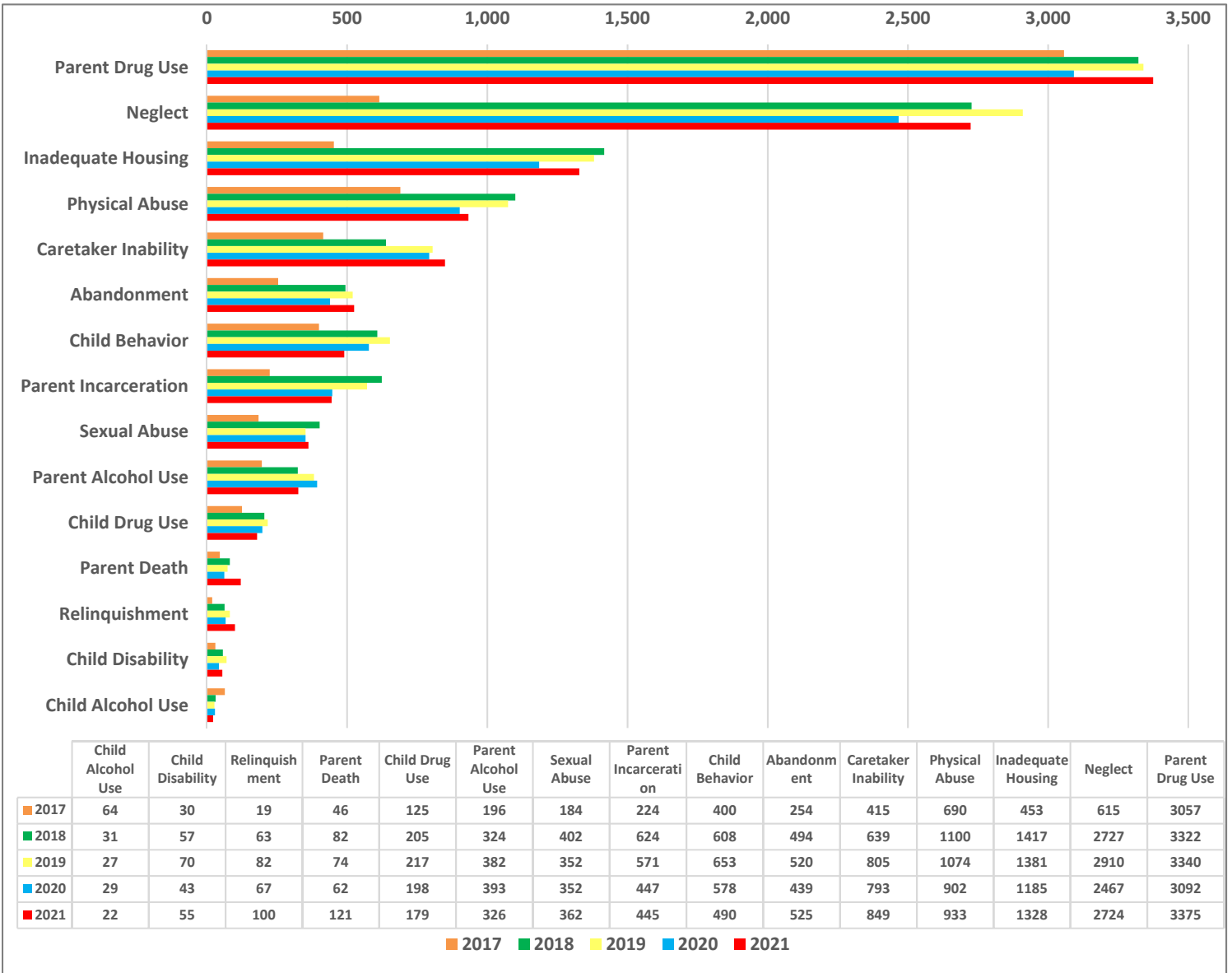
Data Sources: Missouri Office of State Courts Administrator (2009-2020); Missouri Department of Social Services (2000-2008).

# OUT-OF-HOME PLACEMENTS OF CHILDREN BY JUVENILE AUTHORITIES

**Out-of-Home Placements of Children, by Year**



**Adverse Conditions Present at Removals, Calendar Years 2017-2021**

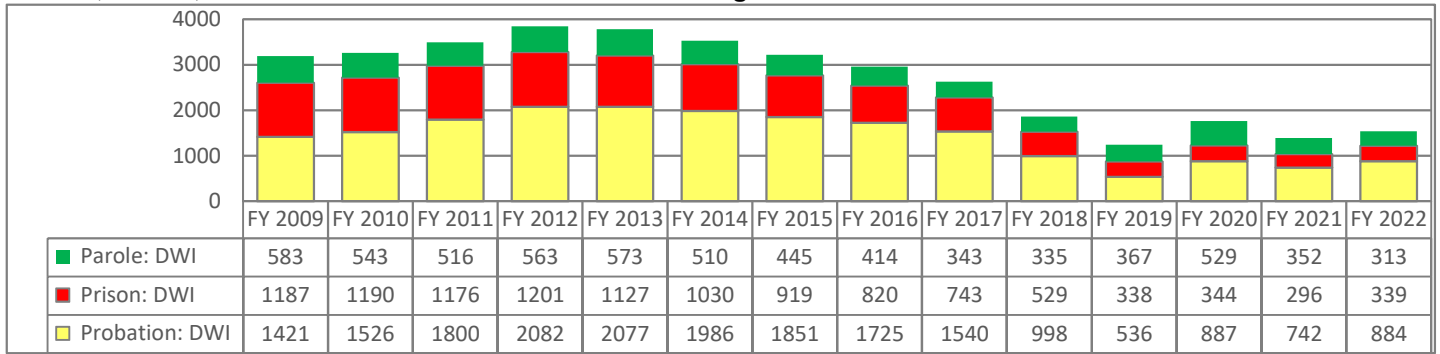


The DSS Children's Division reports do not capture reasons for a removal but document adverse conditions. More than one condition may be applicable to a placement, and other factors may also be considered.

Data Source: Missouri Department of Social Services, Children's Division. Annual data tabulation.

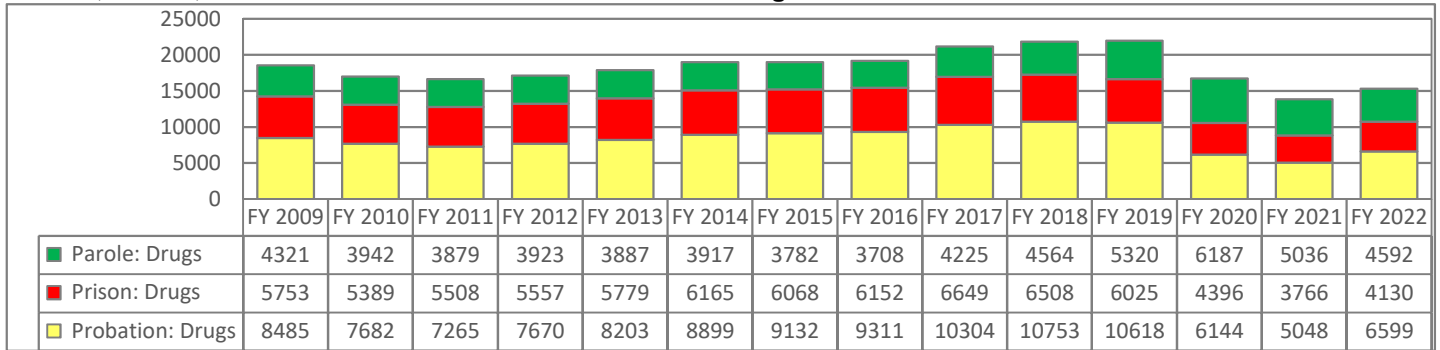
## CRIMINAL JUSTICE DISPOSITION OF DRUG, DWI, AND OTHER STATE CONVICTIONS

### Probation, Prison, and Parole/Conditional Release for Driving While Intoxicated Convictions



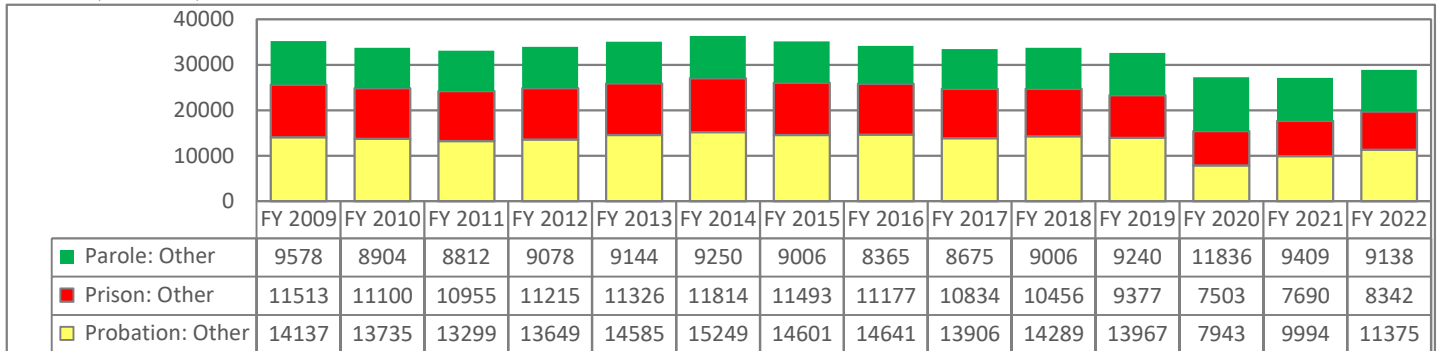
Data Source: Missouri Department of Corrections. Annual data tabulation.

### Probation, Prison, and Parole/Conditional Release for Illicit Drug Convictions



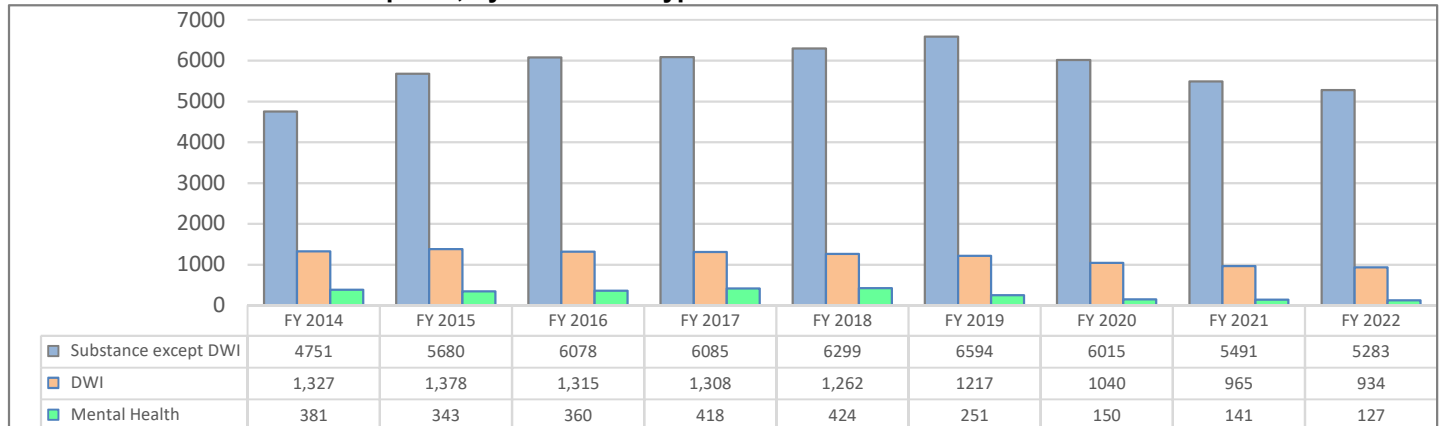
Data Source: Missouri Department of Corrections. Annual data tabulation.

### Probation, Prison, and Parole/Conditional Release for Non-substance Convictions



Data Source: Missouri Department of Corrections. Annual data tabulation.

### Missouri Treatment Court Participants, by Treatment Type

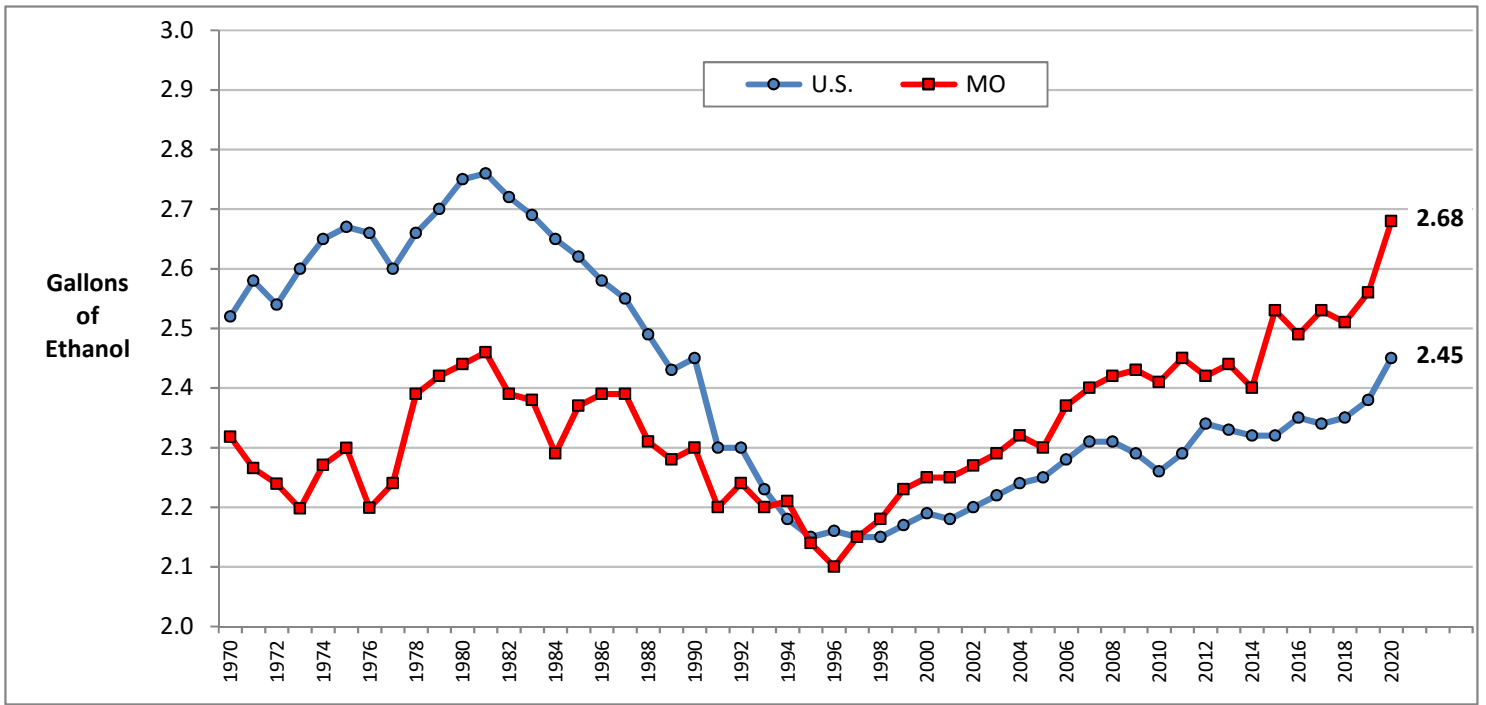


Data Source: Missouri Office of State Courts Administrator. Annual data tabulation.

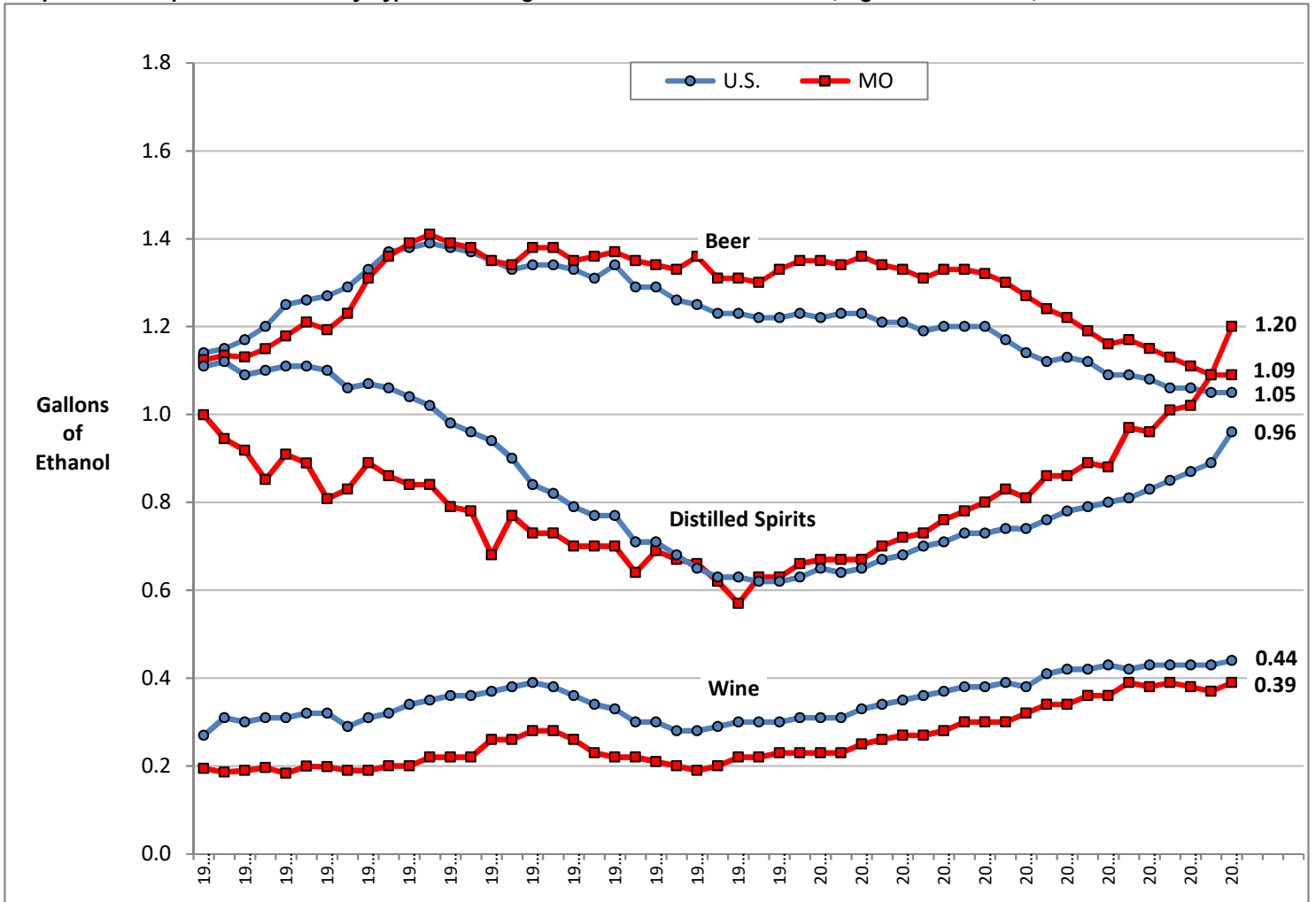


# ALCOHOL CONSUMPTION

Per Capita Consumption of Ethanol in All Beverage Alcohol: United States and Missouri, Ages 14 and Older, 1970-2020



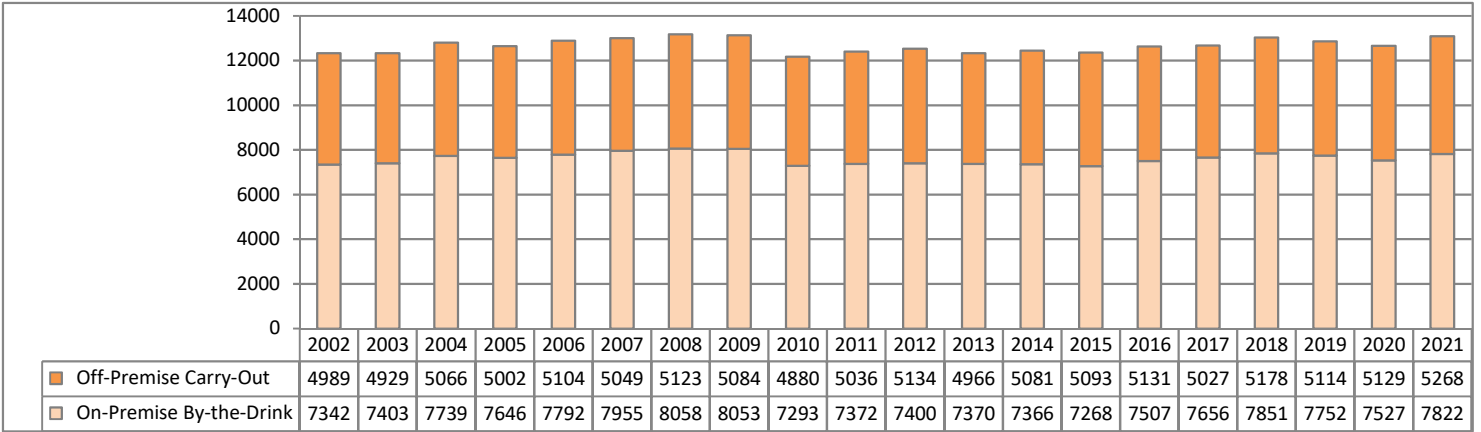
Per Capita Consumption of Ethanol by Type of Beverage: United States and Missouri, Ages 14 and Older, 1970-2020



Data Source: U.S. Dept. of Health and Human Services, NIAAA (April 2022). Surveillance Report #119: Apparent Per Capita Alcohol Consumption: National, State, and Regional Trends, 1977-2020 (and earlier reports).

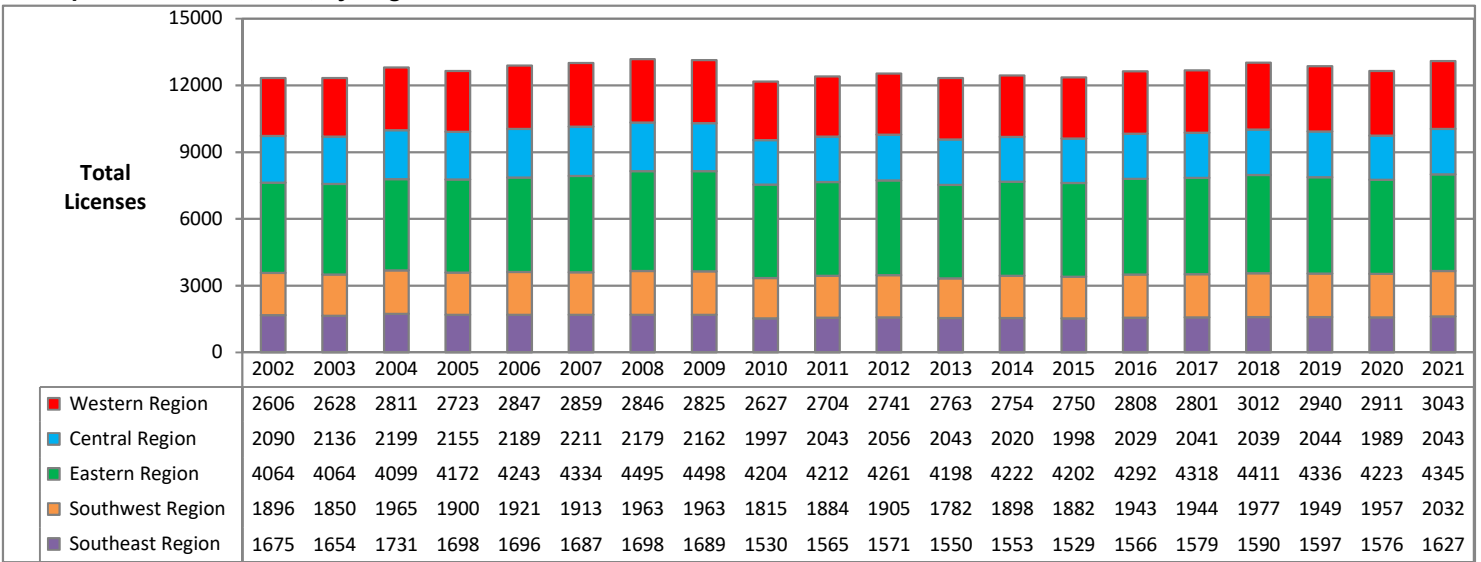
## MISSOURI LIQUOR LICENSES

**Retail Liquor Licenses Issued, by Type of License and Year**



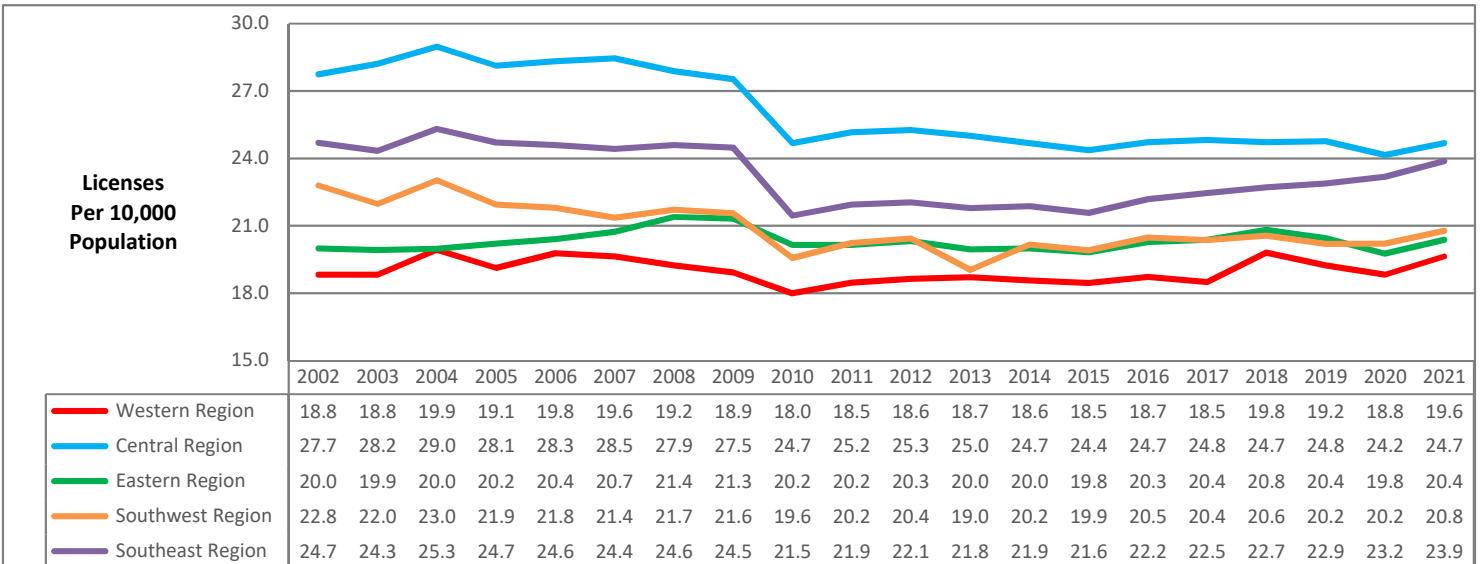
Data Source: Missouri Department of Public Safety, Division of Alcohol and Tobacco Control.

**Retail Liquor Licenses Issued, by Region and Year**



Data Source: Missouri Department of Public Safety, Division of Alcohol and Tobacco Control.

**Retail Liquor Licenses, Rate per 10,000 Population, by Region and Year**

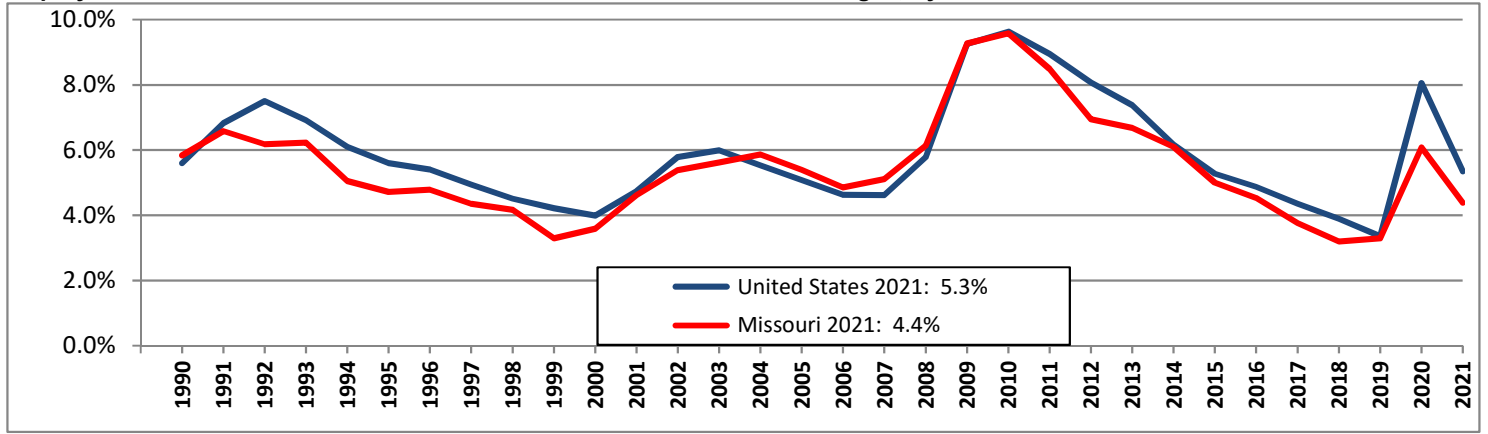


Data Source: Missouri Department of Public Safety, Division of Alcohol and Tobacco Control.

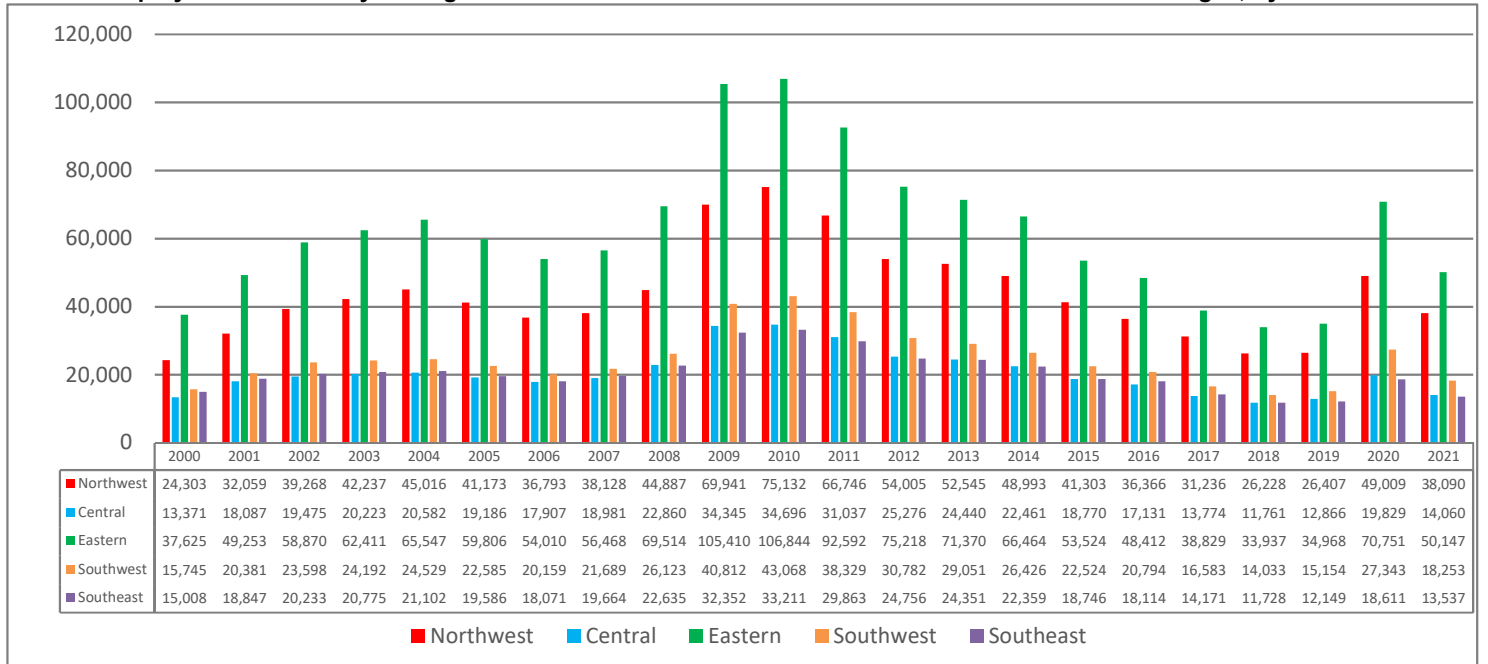
Rates based on U.S. Census Bureau annual population estimates.

## MISSOURI UNEMPLOYMENT

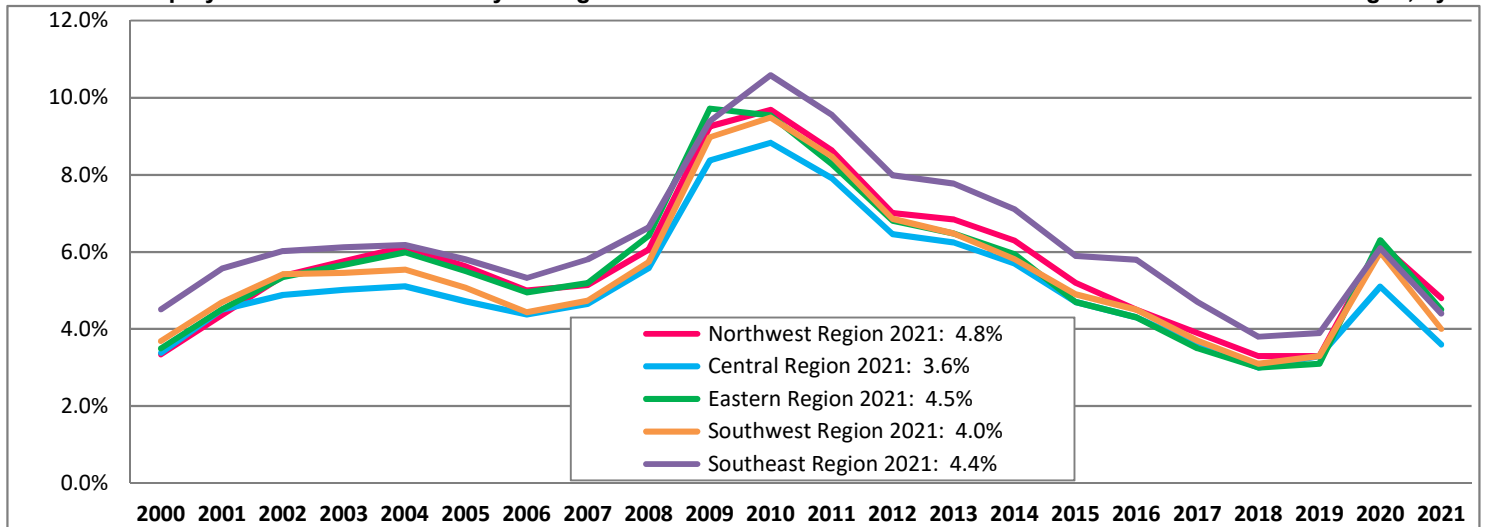
**Unemployment Rates in the United States and Missouri: Annualized Percentages, by Year**



**Number Unemployed in Data Analysis Regions of Missouri Division of Behavioral Health: Annualized Averages, by Year**



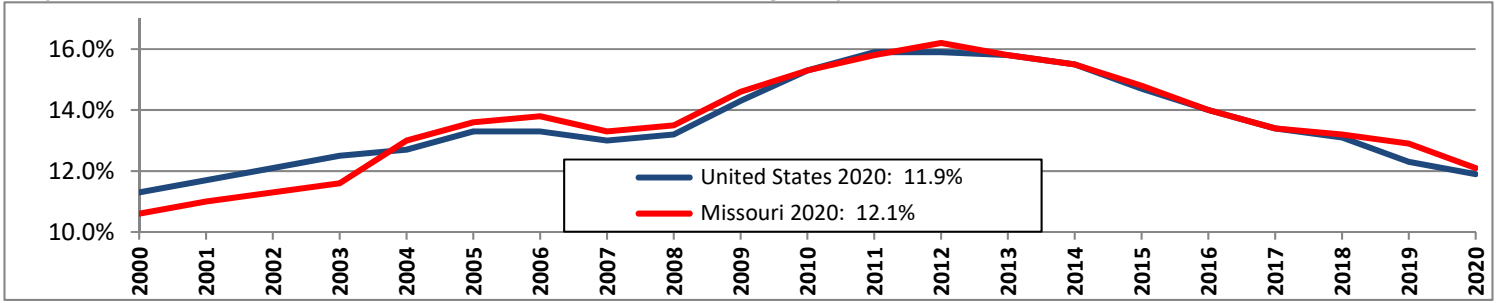
**Calculated Unemployment Rates in Data Analysis Regions of Missouri Division of Behavioral Health: Annualized Percentages, by Year**



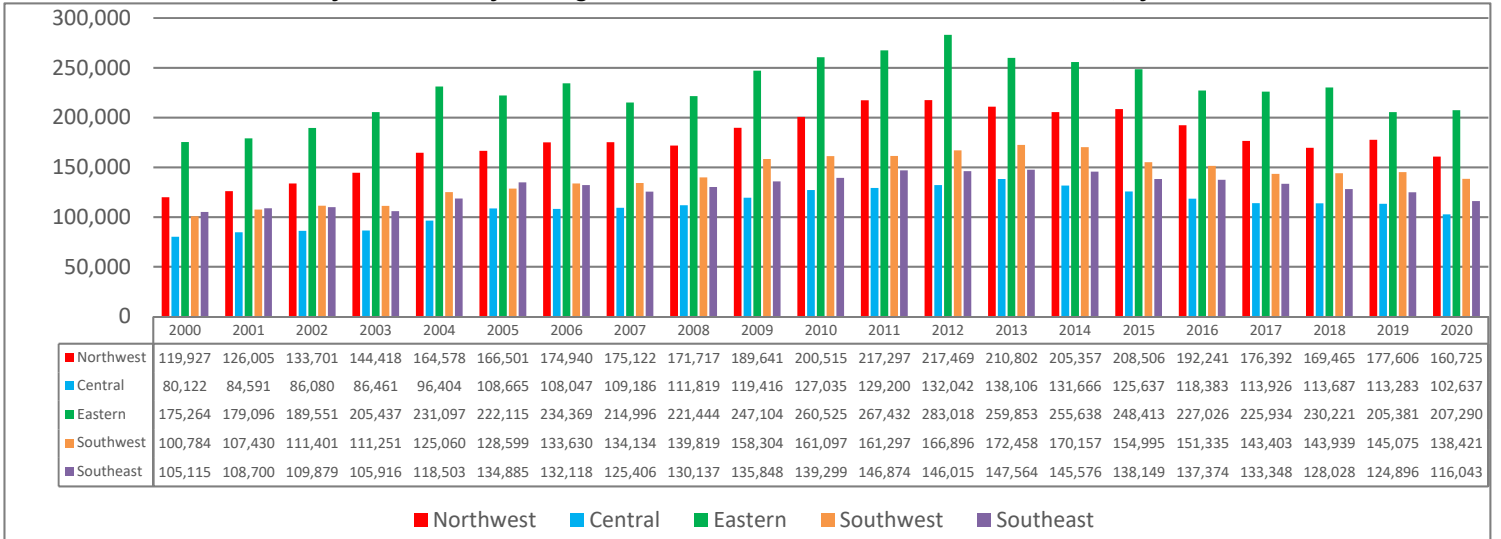
Data Sources: Missouri Dept of Economic Development, Missouri Economic Research and Information Center; Local Area Unemployment Statistics. <http://www.missourieconomy.org/indicators/laus/default.aspx>.  
 U.S. Dept of Labor, Bureau of Labor Statistics. Labor Force Statistics from the Current Population Survey. Table: Employment status of the civilian noninstitutional population, 1941 to date.

# POVERTY IN MISSOURI

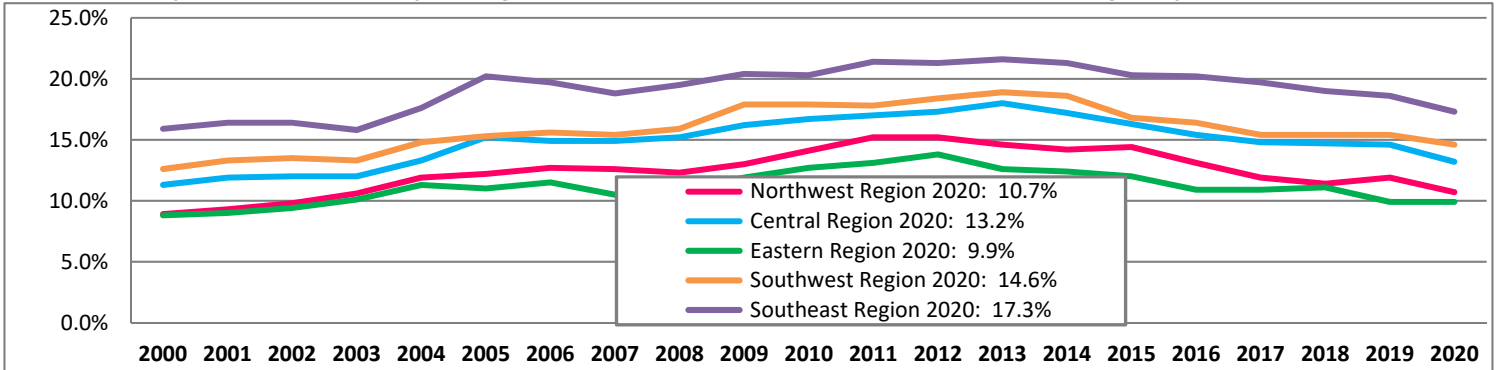
**Poverty Rates in the United States and Missouri: Annualized Percentages, by Year**



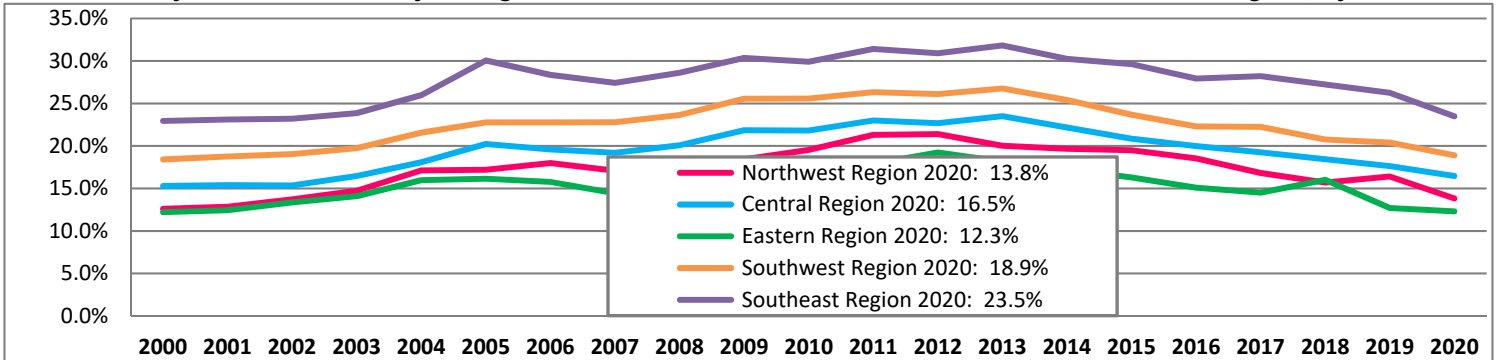
**Number of Individuals in Poverty in Data Analysis Regions of Missouri Division of Behavioral Health, by Year**



**Calculated Poverty Rates for Data Analysis Regions of Missouri Division of Behavioral Health: All Ages, by Year**



**Calculated Poverty Rates for Data Analysis Regions of Missouri Division of Behavioral Health: Children Under Age 18, by Year**



Data Sources: U.S. Department of Commerce, U.S. Census Bureau, SAIPE State and County Estimates 2020 (and earlier reports). Missouri region poverty rate estimates were calculated by the Missouri Department of Mental Health, Division of Behavioral Health.