



Improving lives THROUGH
supports and services
THAT FOSTER self-determination.

Missouri Autism Projects Overview

Information for Parents, Families, and
Case Managers/Support Coordinators

Overview Purpose and Contents



The purpose of this overview is to provide parents, families, and Case Managers/Support Coordinators information about...

Missouri Autism Projects

Parent Advisory Councils (PACs)

Authorities (RSMo and CSR)

Eligibility and Applying for Services

Funding

Enrolling in Regional Autism Project

Preparing for Enrollment Process

Completing Enrollment Process

Office of Autism Services Website

Missouri Autism Projects



- Department of Mental Health's Division of Developmental Disabilities funds five regional autism projects that serve approximately 3500 families statewide.
- Established in 1991
- Authorities were established and funding was secured for family-centered services for individuals with autism spectrum disorder throughout the state.
- Parent Advisory Councils (PACs) were formed to represent and oversee each project and to make recommendations for service needs.
- Each regional autism project PAC elects members to sit on the Missouri Parent Advisory Committee on Autism, which serves as the statewide liaison for the regional councils and the division.

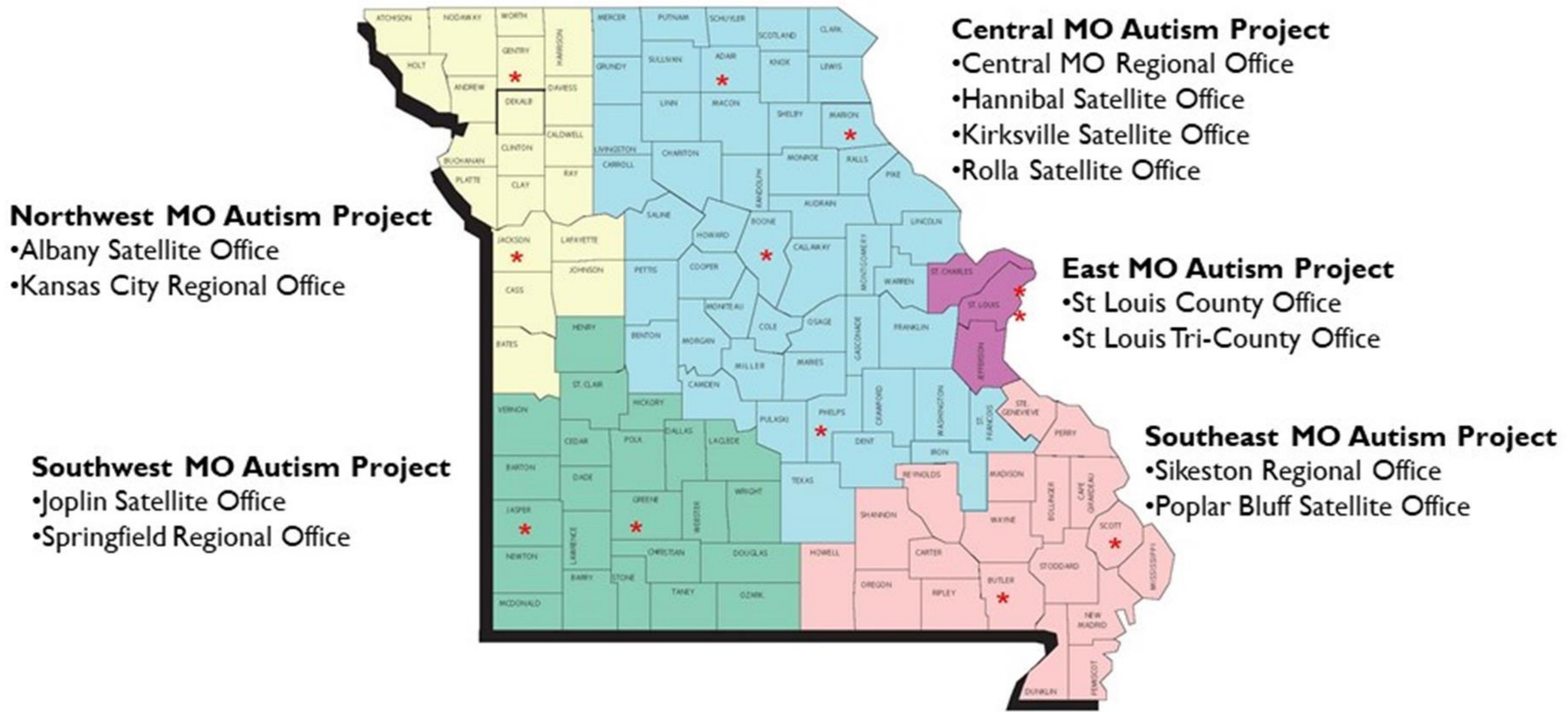
Parent Advisory Councils (PACs)



PACs, made up of volunteers (family members) who are appointed by the Division of Developmental Disabilities, are charged with:

- Attending PAC meetings and providing input. To obtain the dates, times, and locations of PAC meetings, contact the Regional/Satellite Office.
- Responding to the unique needs of families and their loved ones with an autism spectrum disorder and making recommendations to the division about the business model, services, and providers in their respective regions.
- Making recommendations based upon input from families. Families are encouraged to complete and return the **Family Satisfaction Survey** by linking to the regional Autism Project webpage from the Missouri Autism Project home page at: <http://dmh.mo.gov/dd/autism/autismprojects.html>

Missouri Autism Project Regions



Autism Projects Award Winning/Consumer Driven

MISSOURI DIVISION OF
DEVELOPMENTAL
DISABILITIES



STATE innovations BRIEF S

New & Best Practices in State Government

June 1996

PS13-0004

Missouri's Autism Projects: Central, Southeast, Southwest and Northwest

by Melanie Donohue

Autism is a lifelong developmental disability and communication disorder that causes difficulty in interpreting language and social behavior. Autism and autism-like symptoms are the result of a neurological disorder that affects the functioning of the brain. It is often accompanied by severe behavior problems, a lack of affect or show of emotions and a collection of unusual behaviors taken to the extreme. It occurs in about one of every 10,000 births and usually appears during the first few years of life.

Missouri's Autism Projects were initiated to meet the needs of the vastly underserved population of individuals with autism and their families. Before the program began, state mental health officials were not always responding to families' needs. Autism is often misunderstood, inappropriately treated and misdiagnosed. As a result of the projects, parents now determine what services their children need and who provides them.

Embarking on Innovation

Like many families that have been forced to seek out-of-home placement for their children because they could not find help without having to travel large distances, Alan Baugartner and other parents of children with autism banded together and

urged state government to change the way money was spent to serve children with autism. With the assistance of U.S. Governor Roger Wilson (then state senator and chairman of the Senate Appropriations Committee), along with the Department of Mental Health's Division of Mental Retardation and Developmental Disabilities, Baugartner and other families worked tirelessly to plan and implement the Autism Pilot Project in a 20-county area in central Missouri. In turn, they developed a program that is designed to fill the diagnostic and medical needs of children and adults with autism and their families and to work with existing agencies providing services to the best possible outcome for these individuals.

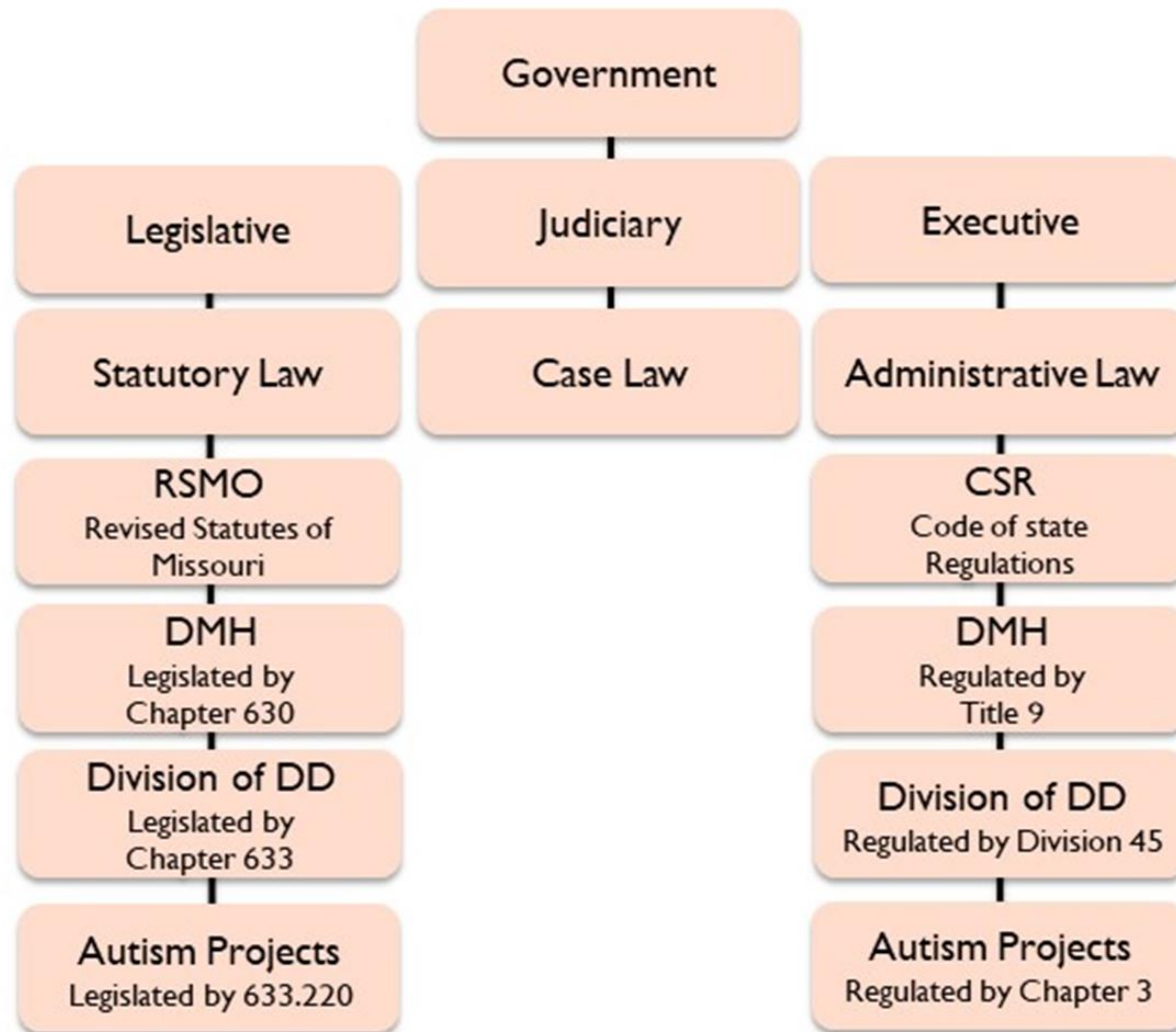


The Council of
State Governments

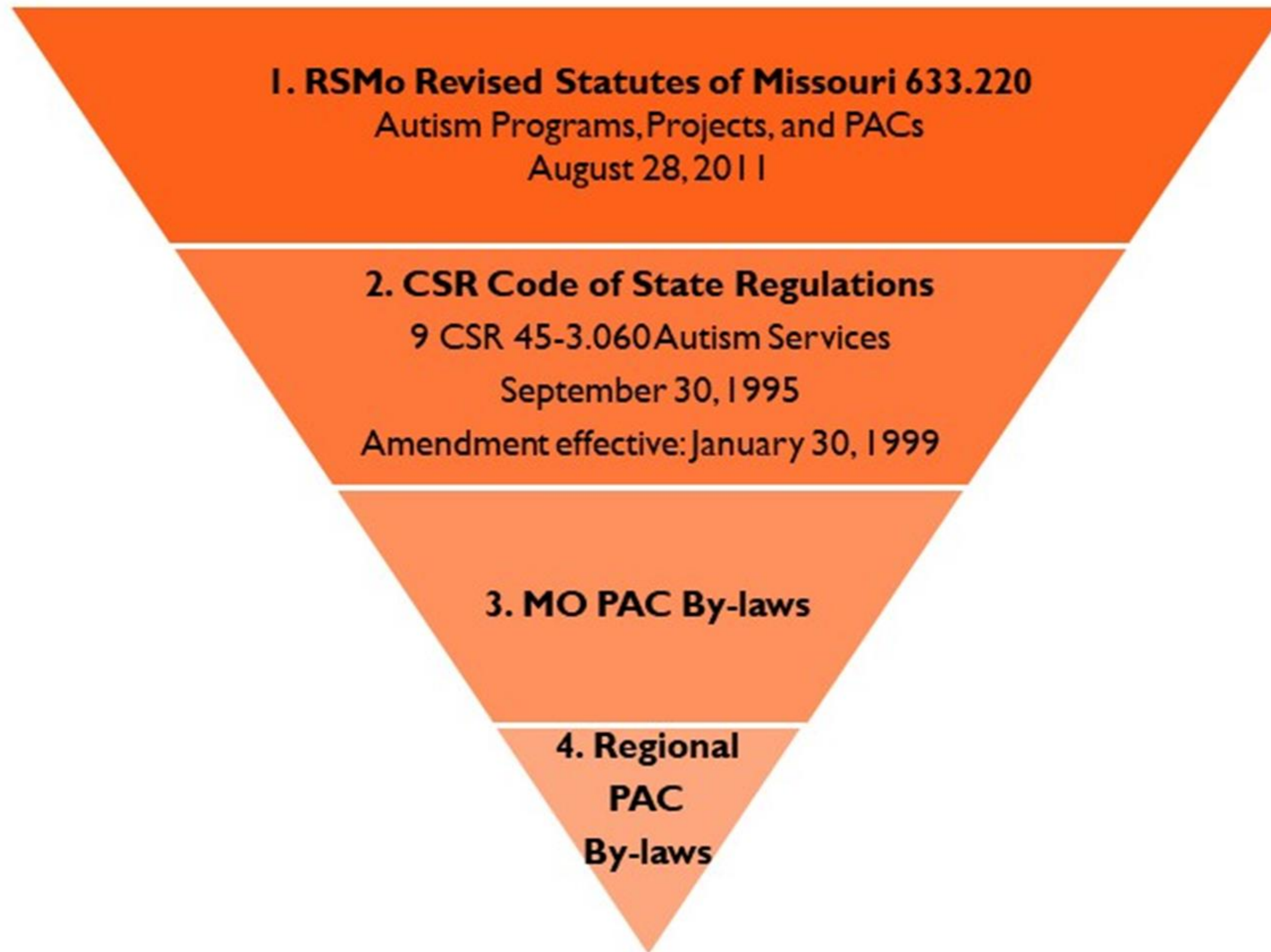
State Innovations Briefs 1

<https://dmh.mo.gov/dd/autism/docs/missouriautismprojectsaward.pdf>

RSMo and CSR



Hierarchy of Authority



<https://dmh.mo.gov/dd/autism/autismprojects.html>

Establishing Programs and Services



| RSMo 633.220.2 | 9 CSR 45-3.060(2) | MO PAC By-laws: Introduction |
|---|---|------------------------------|
| <p>The division of developmental disabilities shall establish programs and services for persons with autism.</p> <p>These programs and services shall be established in conjunction with persons with autism and with families of persons with autism. The division shall establish such programs and services in conjunction with the regional parent advisory councils and with the Missouri parent advisory committee on autism.</p> <p>The programs and services shall be designed to enhance persons with autism spectrum disorder and families' abilities to meet needs they identify and shall:</p> <ul style="list-style-type: none"> (1) Develop skills for persons with autism through supports, services, and teaching; (2) Teach families to provide behavioral supports to members with autism; and (3) Provide needed family support. | <p>The Division...Developmental Disabilities (division) shall establish programs and services for persons with autism.</p> <p>The programs and services shall be established in conjunction with families of persons with autism and shall be designed to enhance the families' abilities to meet needs they identify. The programs and services shall:</p> <ul style="list-style-type: none"> (A) Develop skills for persons with autism through training; (B) (B) Train families to manage behaviors of members with autism; (C) Provide needed family support; and (D) Cooperate with other agencies. | |



Defining Family Support



| RSMo 633.220.1(3) | 9 CSR 45-3.060(1)(B) | MO PAC By-laws: Article 1(B) |
|---|-----------------------------|---|
| <p>Family Support is the heart of the Missouri Autism Projects and is defined within the authorities as:</p> <p>Services and helping relationships for the purpose of maintaining and enhancing family care giving</p> <p>May be any combination of services that enables individuals with autism to reside within their family homes and remain integrated within their communities</p> <p>Services shall be:</p> <ul style="list-style-type: none">○Based on individual and family needs○Identified by the family○Easily accessible to the family○Family-centered and culturally sensitive○Flexible and varied to meet the changing needs of the family members...○Provided in a timely manner contingent upon the availability of resources | | |

Establishing Regional Parent Advisory Councils (PACs)



Establishment of – Composed of – Member Restrictions

| RSMo 633.220.5 | 9 CSR 45-3.060(5)(B) |
|--|---|
| <p>Each regional project shall have a regional parent advisory council composed of</p> <ul style="list-style-type: none"> • Persons with autism • Persons that have family members with autism, including family members that are <ul style="list-style-type: none"> • Young children • School-age children • Adults • And who have met the division's eligibility requirements <p>Members</p> <ul style="list-style-type: none"> • Shall be Missouri residents • Shall not be <ul style="list-style-type: none"> • A service provider • A member of a service provider's board of director • An employee of a service provider • An employee of the division | <p>The Central, East, Northwest, Southeast, and Southwest, MO Autism Projects shall each have parent advisory committees composed of 7-9 persons that have family members with autism including family members that are</p> <ul style="list-style-type: none"> • Young children • School age children • Adults <p>Members</p> <ul style="list-style-type: none"> • Shall be Missouri residents • Family members with autism shall have met the division's eligibility requirements • No committee member shall be <ul style="list-style-type: none"> • A service provider • A member of the service provider's board of directors • An employee of a service provider |

Membership Diversity

| 9 CSR 45-3.060(5)(B) |
|---|
| <p>Encourages</p> <ul style="list-style-type: none"> • Central, NW, SE, and SW PACs to maintain membership from each region within their project boundaries • East to maintain membership from each county in the region and from St. Louis City • All committees to make every effort to <ul style="list-style-type: none"> • Elect members to represent the cultural diversity of the project areas • Represent persons with autism of all ages and capabilities |

Eligibility Determination



- In order to receive services from the Missouri Autism Project, an individual must:
- Be determined eligible to receive services from the Division of Developmental Disabilities
- Have a diagnosis of autism spectrum disorder
- More information about eligibility is available at:
<https://dmh.mo.gov/dd/manuals/docs/admissionsdocument.pdf>



Two Funding Streams

Autism Project General Revenue

Missouri tax dollars; no federal match; every service provided under Missouri Autism Projects is 100% funded by General Revenue.

Autism Projects

- Central Missouri Autism Project
- East Missouri Autism Project
- Northwest Missouri Autism Project
- Southeast Missouri Autism Project
- Southwest Missouri Autism Project

<https://dmh.mo.gov/dd/autism/autismprojects.html>

Medicaid Waiver

Most services provided by the Division of Developmental Disabilities are Medicaid Waiver Services. The federal government reimburses the state approximately 2/3 of every dollar spent on those services.

Home and Community-Based Medicaid Services

- Comprehensive Waiver
- Lopez Waiver
- Community Support Waiver
- Partnership for Hope Waiver

<https://dmh.mo.gov/dd/progs/waiver/index.html>

Applying for Services



- To apply for services from the Division of Developmental Disabilities, individuals should contact the intake department of the Regional/Satellite Office that serves them.
- The link to the Regional/Satellite Offices is:
<http://dmh.mo.gov/dd/facilities/>

Enrolling in Regional Autism Project



Once found eligible to receive services through the Division of Developmental Disabilities, the individual may desire to be referred for Regional Autism Project Services.

| If the individual is enrolled in MO HealthNet | If the individual is not enrolled in MO HealthNet |
|---|--|
| <p>The individual will be referred to the Regional/Satellite Office Case Management team or the Targeted Case Management (TCM) agency for case management services.</p> | <p>The individual will be referred to the Regional/Satellite Office Information Specialist.</p> <p>Individuals and the Information Specialist should work closely together to ensure services are implemented and must follow the protocols defined on the respective regional web page.</p> |

Preparing for the Enrollment Process



Before enrollment in the Regional Autism Project, it is highly recommended that individuals:

- Obtain an assessment for intervention planning* from a clinician(s)
- Review the Information for Families, especially the service directory, on the regional autism webpage that may be accessed from:
<http://dmh.mo.gov/dd/autism/autismprojects.html>
- Have available any of the following documentation from clinicians, educators, and other professionals such as:
 - Assessment(s) for intervention planning;
 - Evaluations, education plans, and other related documentation that identifies challenges and recommendations; and
 - Other relevant information that will allow the Support Coordinator to coordinate services that are individualized and target the needs of the individual and family.

Assessment for Intervention Planning



- An assessment for intervention planning is described in *Autism Spectrum Disorders: Missouri Best Practice Guidelines for Screening, Diagnosis, and Assessment* available at: <http://autismguidelines.dmh.mo.gov>
- If you don't have an assessment for intervention planning, you may wish to contact an Autism Center listed in the "*Help for Your Child with Autism*" brochure under the *Information for Families* Section on your regional autism project webpage that may be found at: <http://dmh.mo.gov/dd/autism/autismprojects.html>

Completing the Enrollment Process



The Support Coordinator from the Regional/Satellite Office Support Coordination team or Targeted Case Management agency will submit the Autism Project Referral Packet (Individual or Basic Support Plan, Choices Form, and Referral Form) to the Utilization Review Committee and follow established budget protocols to obtain service authorizations.

Autism Referral Packet

- ✓ Individual or Basic Support Plan
- ✓ Choices Form
- ✓ Referral Form

Utilization Review Committee

Follow Established Budget Protocols to Obtain Service Authorizations

Upon plan and service authorization approval, the plan and the budget will be distributed to relevant parties so that services may be initiated.



For More Information

The Office of Autism Services developed the ***Autism Projects Overview*** webinar to provide a more in-depth overview of the Missouri Autism Projects.

The webinar can be accessed on the Office of Autism Services website at:

<http://dmh.mo.gov/dd/autism/>

For More Information



For more information about the Autism Projects, the Parent Advisory Councils, and the Autism Projects, click:

<http://dmh.mo.gov/dd/autism/autismprojects.html>

The screenshot shows the Missouri Department of Mental Health website. The navigation menu includes 'Crisis Assistance', 'Alcohol and Drug Use', 'Mental Illness', 'Developmental Disabilities', and 'Programs'. The 'Developmental Disabilities' menu item is circled in red. Below the navigation, the 'Missouri Autism Projects' page title is also circled in red. The page content includes a breadcrumb trail: 'Home > Developmental Disabilities > Office of Autism Services'. The main text describes the Department of Mental Health's Division of Developmental Disabilities funding five regional autism projects. It also lists the 'Hierarchy of Authority' and 'MO Parent Advisory Committee/Autism Projects'.

Missouri Autism Projects

Home > Developmental Disabilities > Office of Autism Services

The Department of Mental Health's Division of Developmental Disabilities funds five regional autism projects that collectively provide services to approximately 3500 families statewide. The first project was established in 1991 after families in rural Missouri approached legislators to ask for autism-specific family support. As a result of these efforts, authorities were established and funding was secured for family-centered services for individuals with autism spectrum disorders throughout the state. Parent Advisory Committees (PACs) were formed to represent and oversee each autism project and to make recommendations for service needs. Each regional autism project Parent Advisory Committee elects members to sit on the Missouri Parent Advisory Committee on Autism, which serves as a statewide liaison for the regional committees and the division.

The council on State Governments featured the Missouri Autism Projects in its June 1996 issue of *State Innovations Briefs: New and Best Practices in State Government*. *State Innovations Briefs* highlight award-winning programs in state government selected by state leaders and managers.

Hierarchy of Authority:

1. Missouri Revised Statutes Section 633.220
2. Code of State Regulations 9 CSR 45-3.060
3. By-laws (see specific committee / project below)

MO Parent Advisory Committee/Autism Projects:

- FY18 Allocation Map
- Missouri Advisory Committee
- Central Missouri Autism Project
- Eastern Missouri Autism Project
- Northwest Missouri Autism Project
- Southeast Missouri Autism Project
- Southwest Missouri Autism Project

Autism Project Services May Include:

- Assessment
- Advocacy training;
- Behavior management training and supports
- Communication and language therapy;

Developmental Disabilities

- About Us
- Accessible Housing
- Directives, Regulations & Guidelines
- Director's Office
- Drafts for Public Comment
- Education and Training
- Email Blasts
- Federal Programs
- Forms, Manuals & Publications
- Frequently Asked Questions
- HCBS Transition Plan
- Health & Safety
- Individualized Supports & Services
- Licensure and Certification
- Office of Autism Services
- Promoting Employment
- Provider Bulletin
- Regional Offices
- Related Links
- Self Determination
- State Operated Programs
- Supporting Families
- Webinars

Get Email Updates

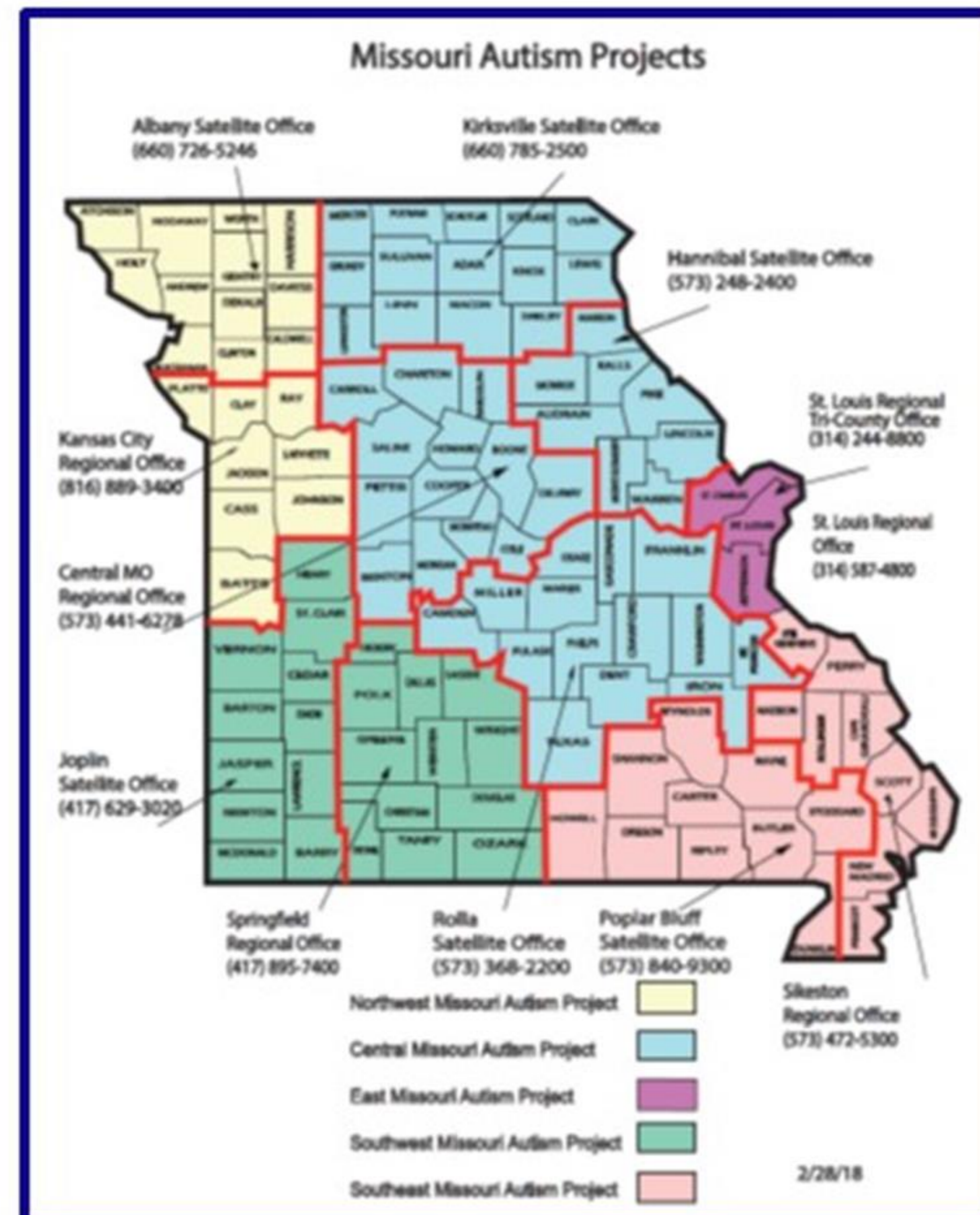
For More Information



For more information about the Autism Projects, contact the division's Regional/Satellite Information Specialist or the Office of Autism Services at 573-751-4054.

The link to the Regional/Satellite Offices is:

<http://dmh.mo.gov/dd/facilities/>





Improving lives THROUGH
supports and services
THAT FOSTER self-determination.

Thank You