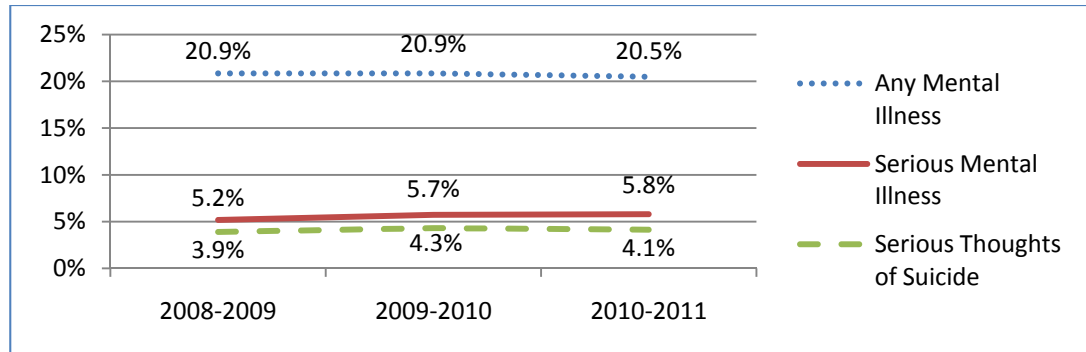


## Missouri's Adult Past Year Mental Health...



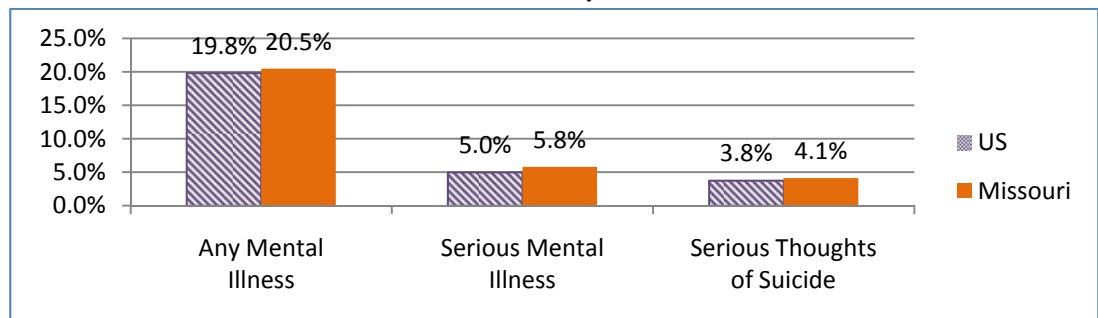
- ✦ This brief uses data from the National Survey on Drug Use and Health to provide an overview of past year mental health of adults (18+), including comparisons to prior years<sup>1</sup> and a comparison to the current national data.
- ✦ Approximately 1 in 5 Missourians have had some form of mental illness<sup>2</sup> in the past year. Slightly over 5% qualify as having serious mental illness while less than 5% have had serious thoughts of suicide.
- ✦ Reported rates of mental illness and suicidal thoughts have remained relatively stable over the past few years.

### Missouri Adult Past Year Mental Health Over Time



- ✦ Missourians have rates of mental illness and suicidal thoughts that are similar to the national average.

### Missouri Adult Past Year Mental Health as Compared to the US Rates



For more information please contact the BHEW at 314-877-5942 or [susan.depue@mimh.edu](mailto:susan.depue@mimh.edu)

Behavioral Health



Epidemiology Workgroup

<sup>1</sup> In order to have a sufficient sample size, the NSDUH uses two year estimates to provide state level data.

<sup>2</sup> Per SAMHSA the category of 'any mental illness' are those who have "the presence of any mental, behavioral, or emotional disorder in the past year that met DSM-IV criteria. Among adults with a disorder, those adults whose disorder caused substantial functional impairment (i.e., substantially interfered with or limited one or more major life activities) are defined as having serious mental illness (SMI)".