

Hope Starts Here

PRO-SOCIAL ACTIVITIES

Springfield Recovery Community Center

Recovery

- What are recovery supports?
- What is an RCC (Recovery Community Center)?
- Missouri RCC's

Recovery Supports



Community Impact



Awareness Events



Celebrations



Fun





St. Louis Empowerment Center

A Recovery Community Center

MISSION AND PHILOSOPHY

It is the mission of the St. Louis Empowerment Center to provide peer support, recovery services, and a sense of community to individual, in the St. Louis area, who have lived experience with behavioral health disorders.



About STLEC Recovery Community Center



A program of the St. Louis Empowerment Center, the Recovery Community Center (RCC) provides peer-based recovery support services to individuals with substance use disorders (SUD). We seek to specifically serve individuals who have lived experience with opioid use disorders (OUDs), as well as family members whose lives have been directly affected by the opioid crisis.

Employment

- Two Tier Job-Assistance Program
 - Tier 1
 - Assistance with Resume writing, job searches, interview skills, etc.
 - Tier 2
 - Part-time employment at the STLEC
 - Hires from volunteer base
 - Many trained to be Peer Specialists (CPS)
 - Support in gaining employment in other organizations



Services and Programs

- Recovery Support Groups
 - Including but not limited to OUD, Co-Occurring, and WRAP groups
- Peer Specialist Services
- Social Activities/Community Outings
- Resource/Referrals
- **Narcan**
- Daily Lunch/Television/Pool Table/Telephone
- Computer Lab
- Telephone Recovery Support



Partnerships

- Let's Start, Inc
 - In partnership with Let's Start, Inc., the St. Louis Empowerment Center RCC is holding two Healthy Relationship groups in addition to those currently offered during drop-in hours:
 - For individuals at any point in recovery from OUD
 - For family members of individuals at any point in recovery from OUD



Location Contact Information

- St. Louis Empowerment Center RCC
1908 Olive Street
St. Louis, MO 63103
314-652-6100
www.dbsaempowerment.org





Missouri Network

For Opiate Reform & Recovery

Services offered

- **Harm Reduction**

Overdose education and naloxone distribution

Hepatitis C and HIV testing with treatment resources

Safer using education and early engagement

- **Treatment referrals**

All levels of care; STR, Medicaid, Commercial Insurance

- **Groups and activities**

Family support, Refugee Recovery, SMART Recovery, HA, (LGBTQ specific), Yoga, Kung Fu, Tai Chi

- **Peer Support**

Peers are assigned to every SUD consumer we have and family members are also assigned peers

Level of care determines involvement

Treatment provider/STR collaboration

- **Community engagement and social events**

Levels of Care

- **SUD consumers**

Individuals actively using substances are our
highest level of care (1)

Individuals currently in treatment (2)

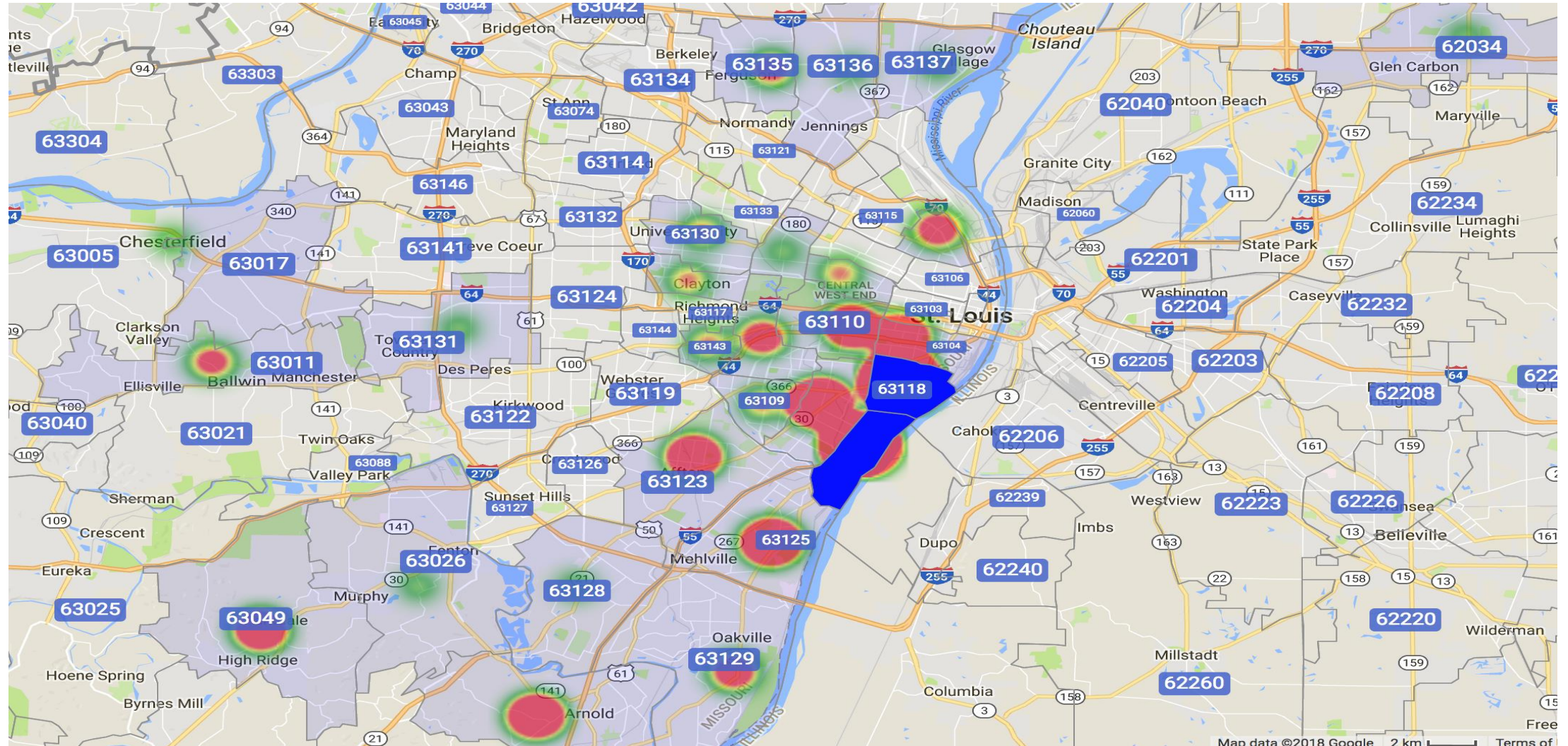
Individuals in early recovery (3)

Individuals in long term recovery (4)

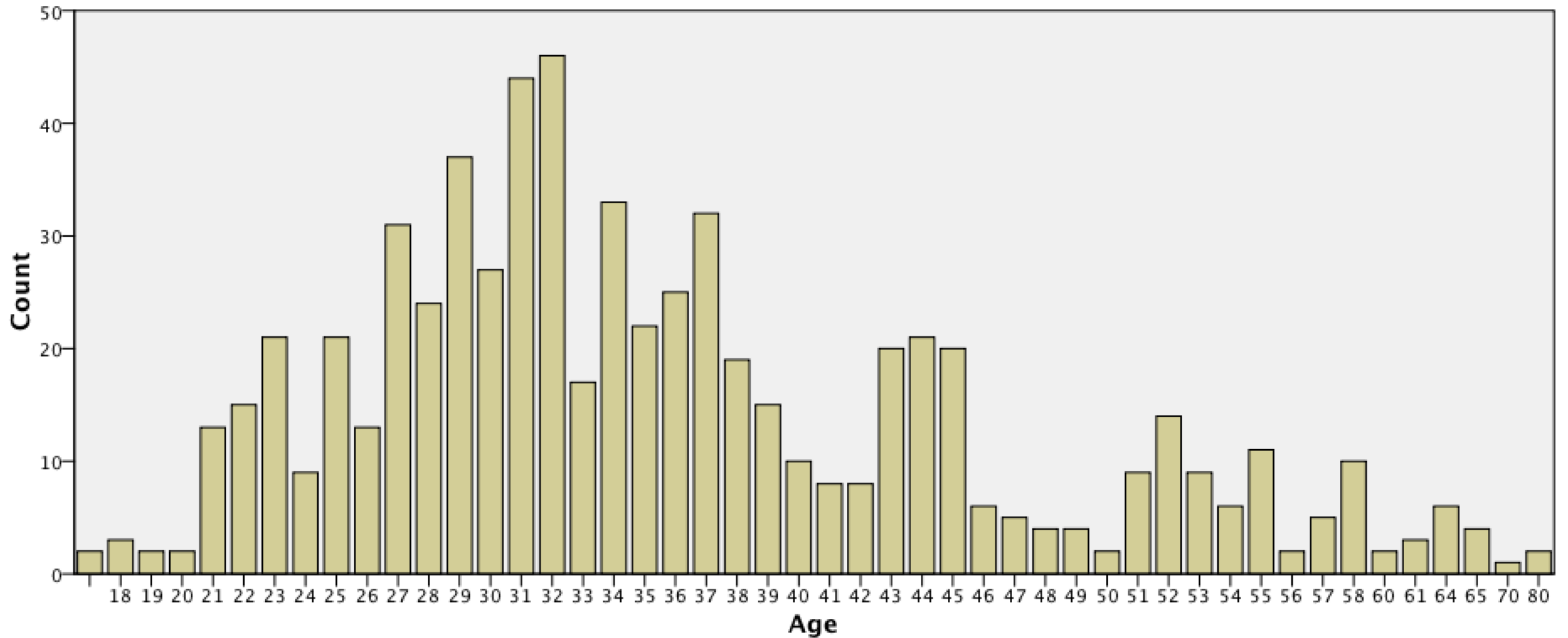
- **Family member/loved ones consumers**

Two levels of care (?)

Snapshot of our population – SUD only (location)



Snapshot Continued (Age)



And More Numbers (60 day aggregated)

- Gender

Males – 417 (62.7%)

Females – 238 (35.8%)

- Duplication

Yes – 346 (51.9%)

No – 134 (20.2%)

Unmeasured 184 (27.7%)

- Race

Caucasian – 434 (65.3%)

Black - 165 (24.8%)

Multi-Racial – 56 (8.4%)

One More to
go!

- **Sexual Orientation**

Straight - 583 (87.7%)

Gay – 34 (5.1%)

Bi-sexual – 45 (6.8%)

- **Naloxone reversals (since last visit)**

No – 539 (81.1%)

Yes with 911 call – 42 (6.3%)

Yes without 911 call – 68 (10.2%)

We have more data if there are any questions?

Where do we
go from here?

- Reduce mortality rates of active users
- Use early engagement of harm reduction services as an access point to treatment
- Improve retention rates for all levels of care but the important population will be STR, State funded, and Medicaid consumers
- Treat not only the SUD consumer but also the family and the community
- Discussion?