

Figure 17: Juvenile Court Out-of-Home Placements of Children, and Reasons for Removal from Home, 1997-2004

Source: [40]

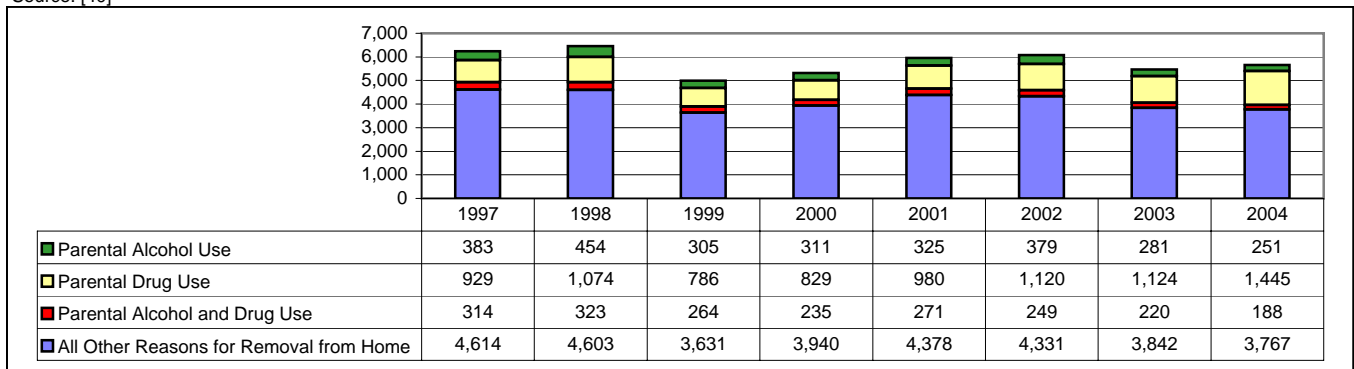


Figure 18: Trend in Missouri Public School Dropout Rate, 1993-2004

Source: [10]

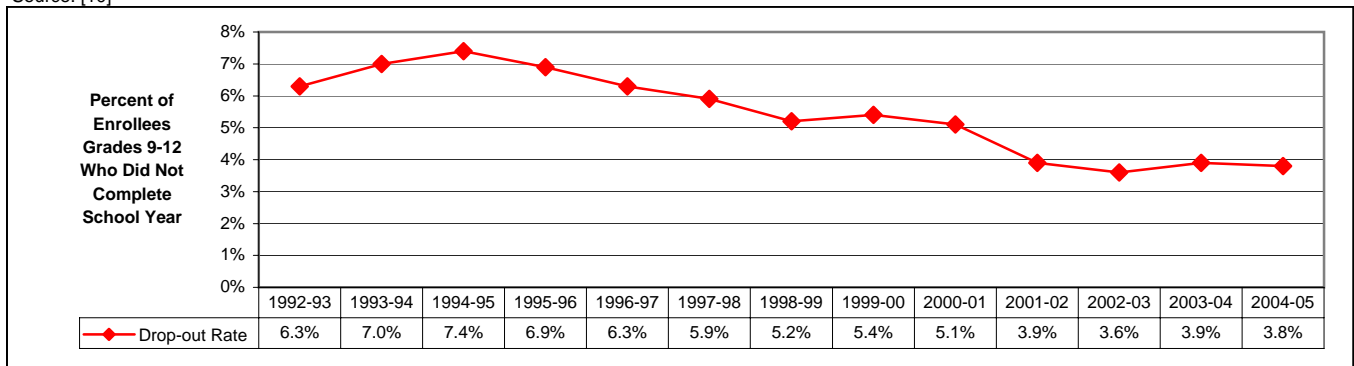


Figure 19: Trends in Missouri Juvenile Court Referrals for Adolescent Alcohol and Drug Offenses, 1993-2004

Sources: [41]

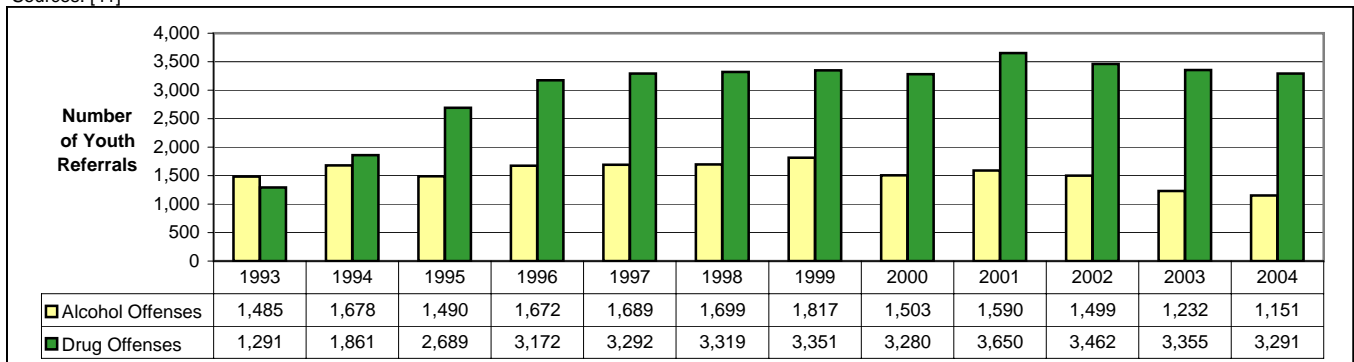


Figure 20: Trend in Missouri Juvenile Court Referrals for Violent Offenses, 1994-2004

Sources: [41]

