

Figure 21: Trends in Violent Crime and Domestic Violence Reports in Missouri, 1992-2003

Source: [31, 32, 33]

Beginning in 2001, violent crime data is not comparable to previous years due to mandatory reporting to Missouri Highway Patrol

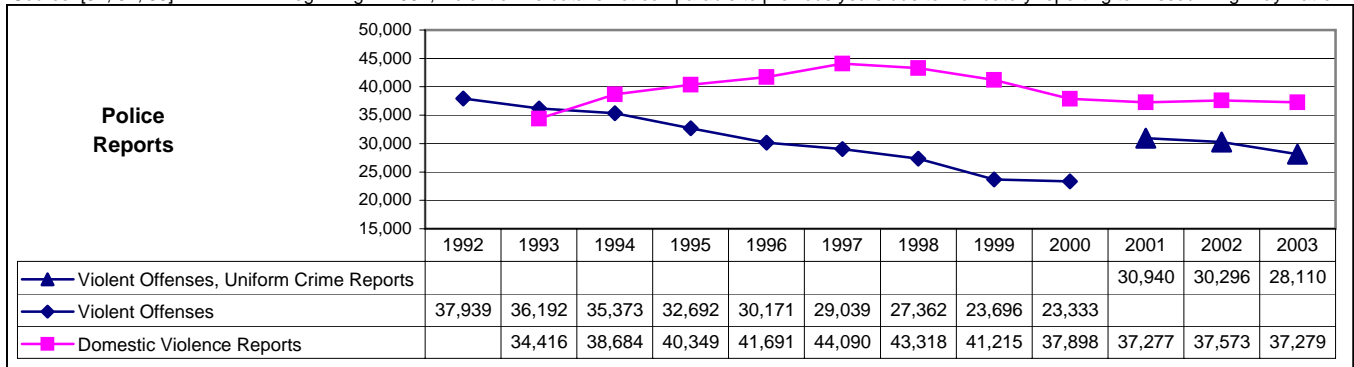


Figure 22: Trend in Arrests for Impaired Driving Offenses in Missouri, 1992-2003

Sources: [32, 34]

Beginning in 2001, data is not comparable to previous years due to mandatory reporting to Missouri State Highway Patrol

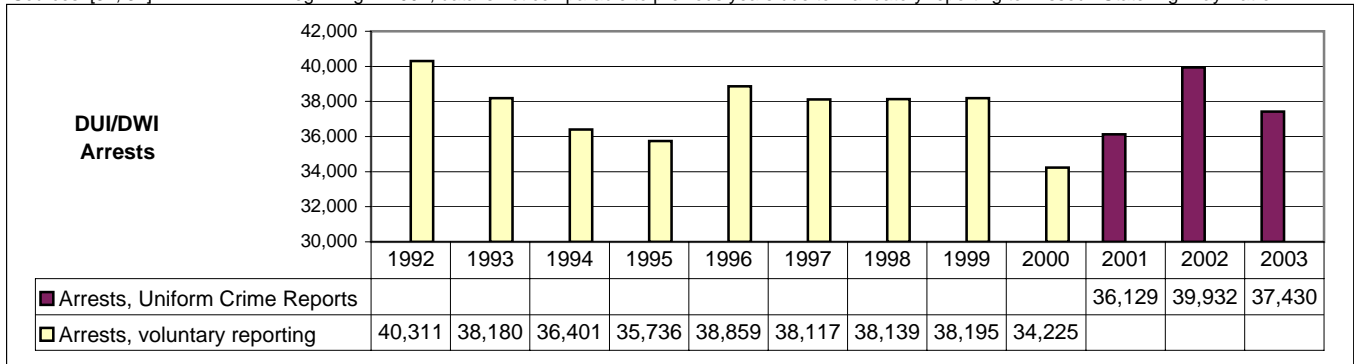


Figure 23: Trend in Arrests for Drug Offenses in Missouri, 1992-2003

Sources: [32, 34]

Beginning in 2001, data is not comparable to previous years due to mandatory reporting to Missouri State Highway Patrol

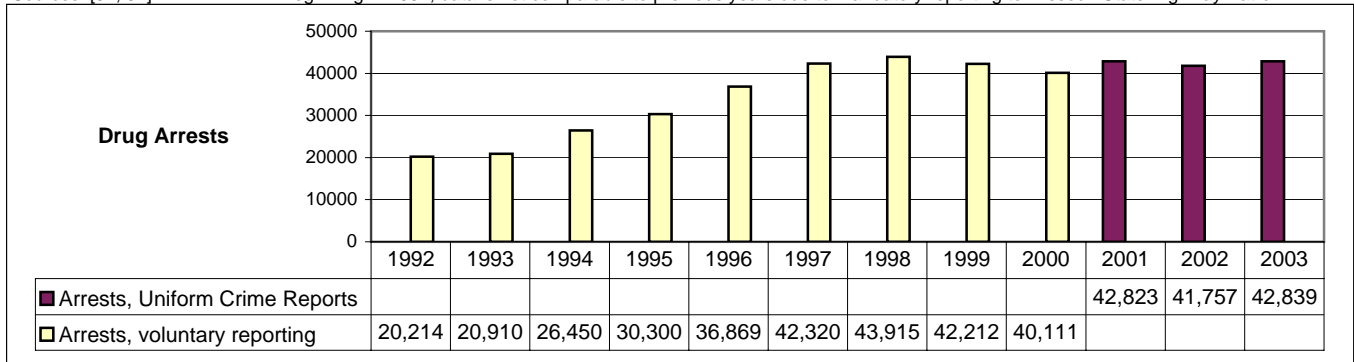


Figure 24: Methamphetamine Labs Seized in Missouri, 1992-2004

Sources: [35, 43]

Beginning in 2001, each confiscation is counted only once, regardless of number of participating law enforcement agencies

