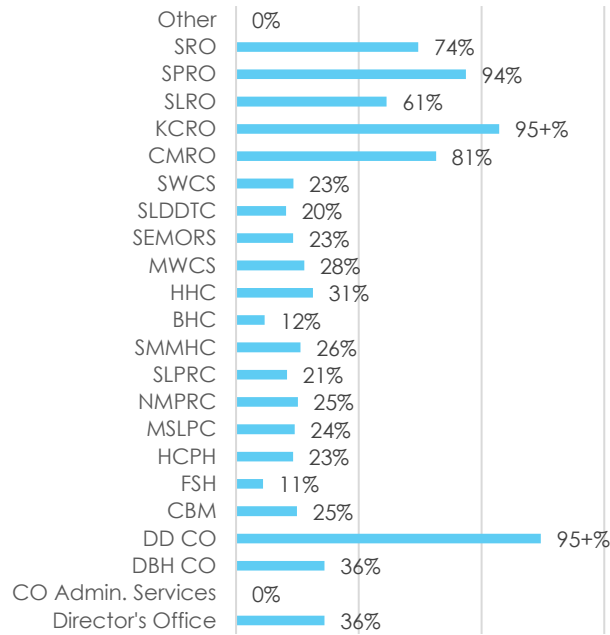


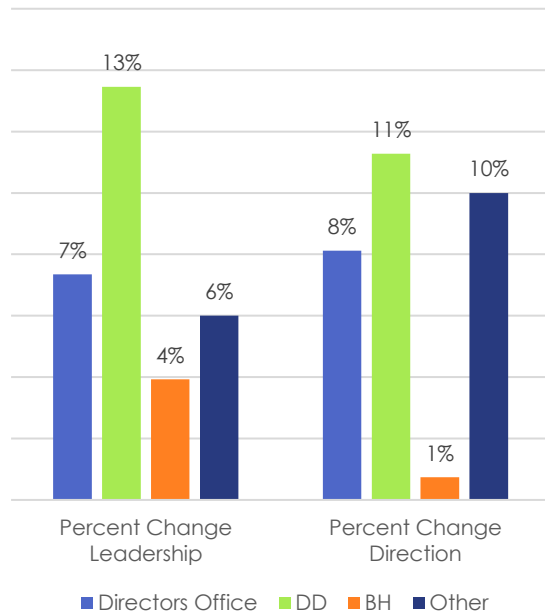
Department Dashboard

Quarterly Pulse Survey Data

Quarterly Pulse Survey Participants by Facility (Qrt. 3 FY 2019)



Quarterly Pulse Survey (Qrt 3 FY 2019) Average Percent Increase in Metrics from Previous Quarter by Division

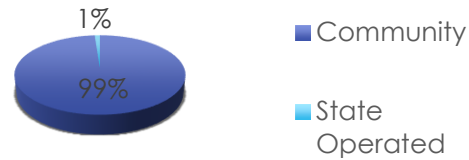


Demographics Data

Total Individuals Served by DMH FY 2018

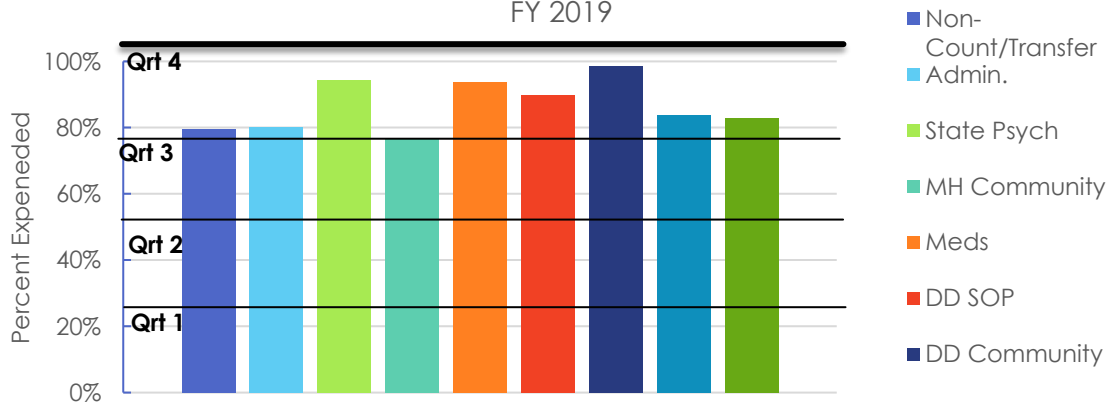
134,022

DMH Population by Service Setting (Quarter 3 FY 2019)



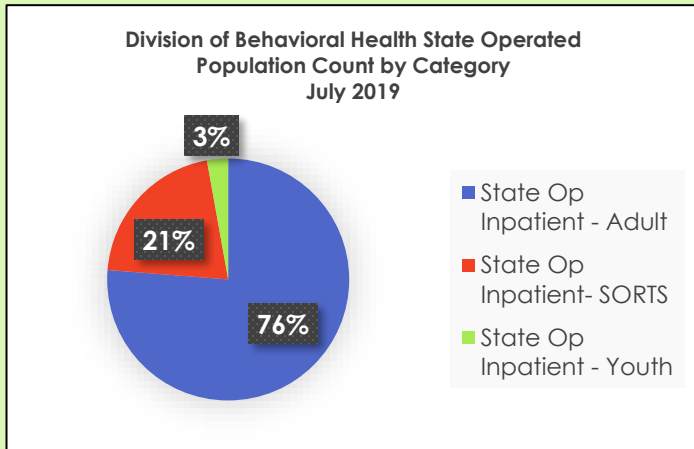
Budget/Administrative Data

Budget Expended by Department/Program FY 2019



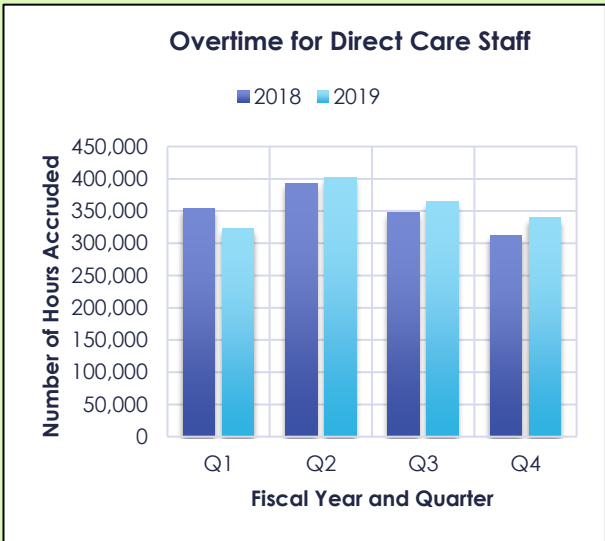
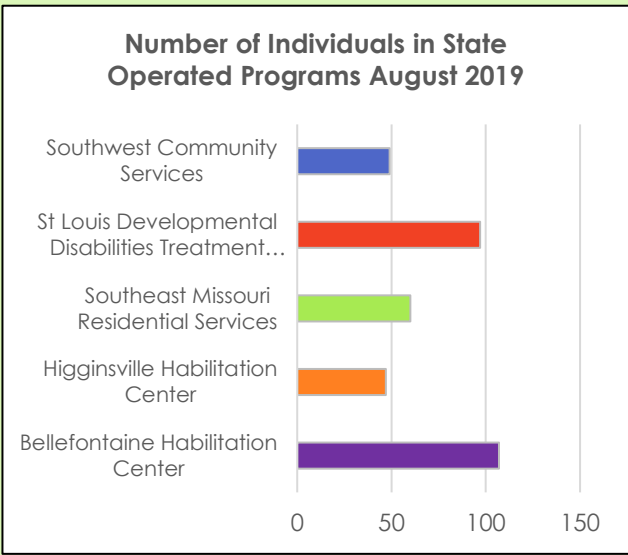
Department Dashboard

State Operated Facility Data



Average Length of Stay of Consumers Incompetent to Proceed to Restoration (May- July 2019)

190 days



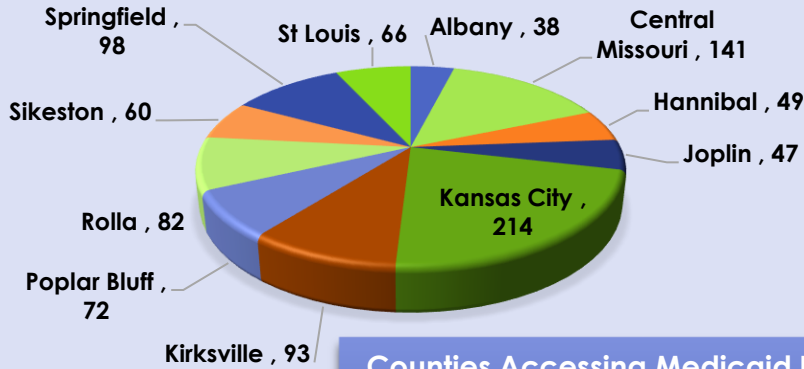
Licensure and Investigations Data

Coming October 2019!

Coming October 2019!

DD Division Dashboard

INDIVIDUALS WITH EMPLOYMENT SERVICES AUTHORIZED AUGUST 2019



Individuals in Waiver August 2019

Community: 4193
 Comprehensive: 8487
 Lopez: 329
 Partnership: 2128

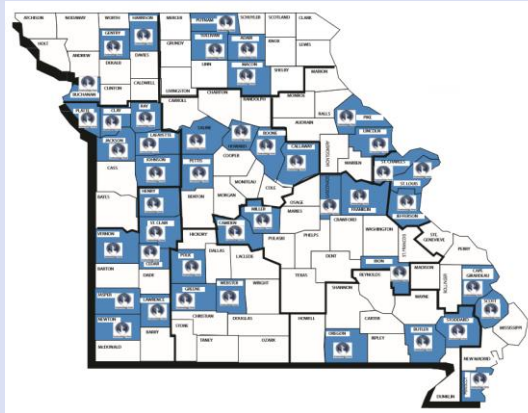
Percent of Authorizations Entered into CIMOR Before Implementation August 2019

61%

Incidents Entered Directly by Provider July 2019

95%

Counties Accessing Medicaid Funded Technology August 2019

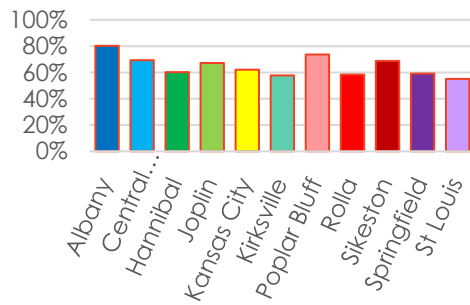


Individuals using technology
 Benchmark: 1,658 by December 31, 2021

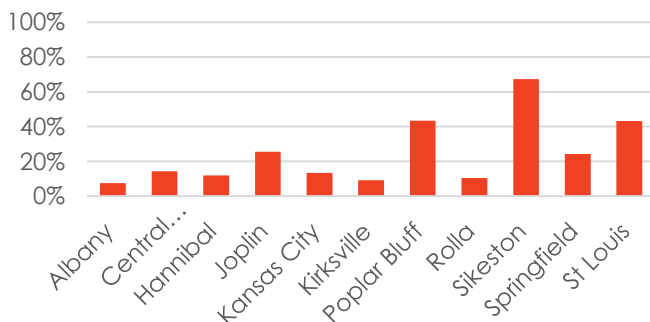
Current goal met: 13%

Percent and Number of Individuals using Self Directed Services (SDS) August 2019: 14.80% [2,247]

Percentage of Individuals Receiving Services Under Guardianship August 2019



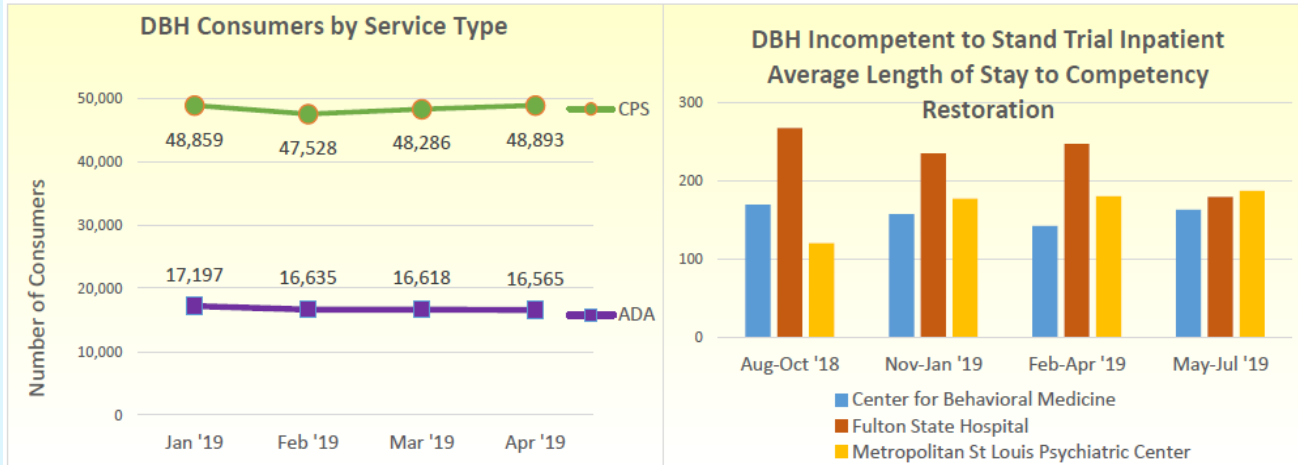
Percentage of People with Behavioral Challenges (or 7's) with Behavioral Service Authorizations August 2019



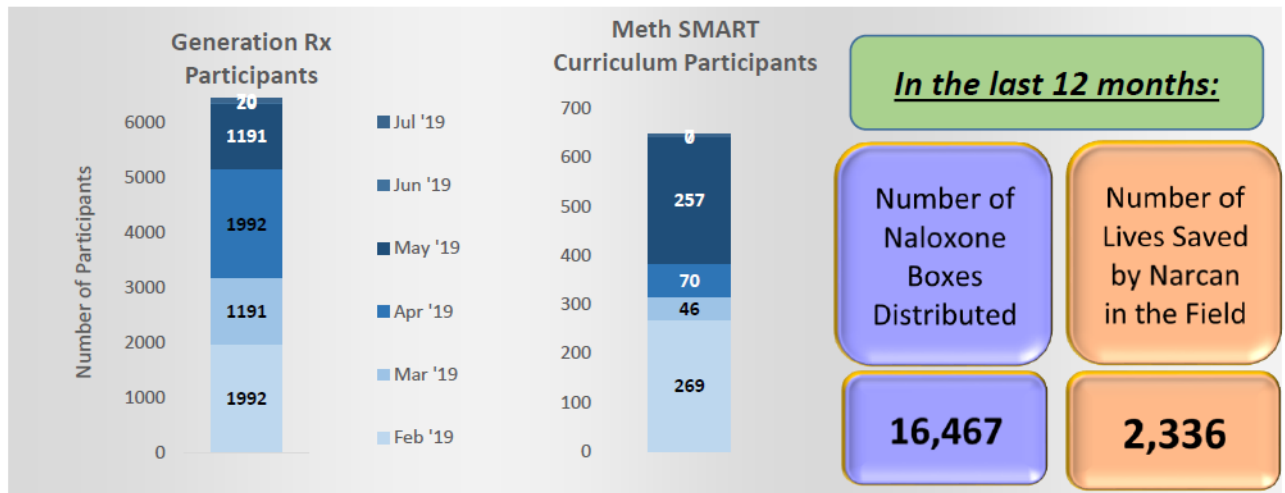
Providers on Status August 2019
 Total: 14
 Removed: 2

Provider Improvement Plan (PIP): 8
 Critical Status Plan: 5

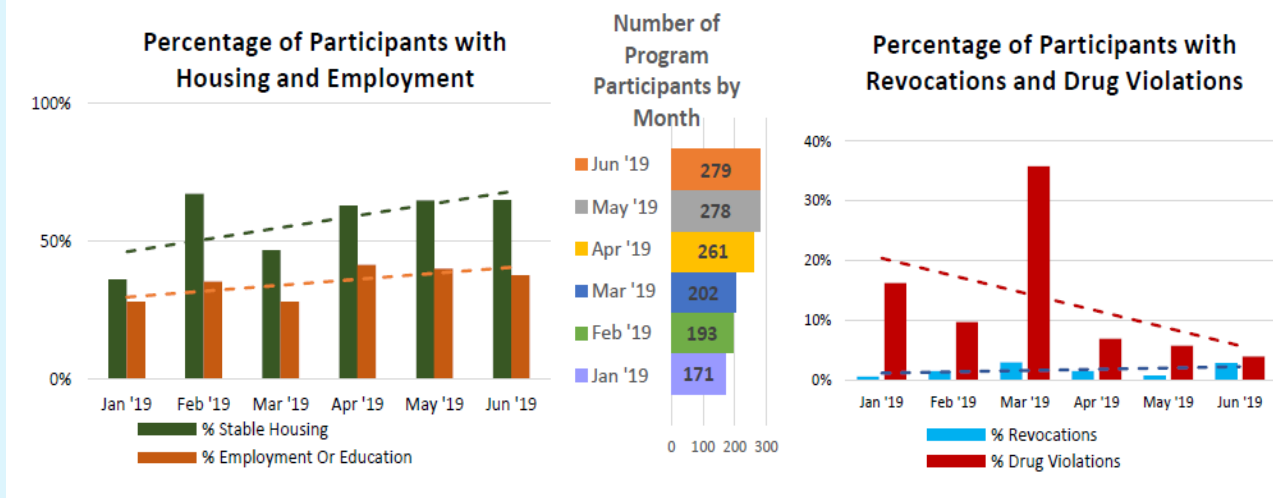
DBH Division Dashboard



Prevention Activities



Justice Reinvestment Treatment Program



Placemat Dashboard

